



## Pritchards Road, E2

### £450,000

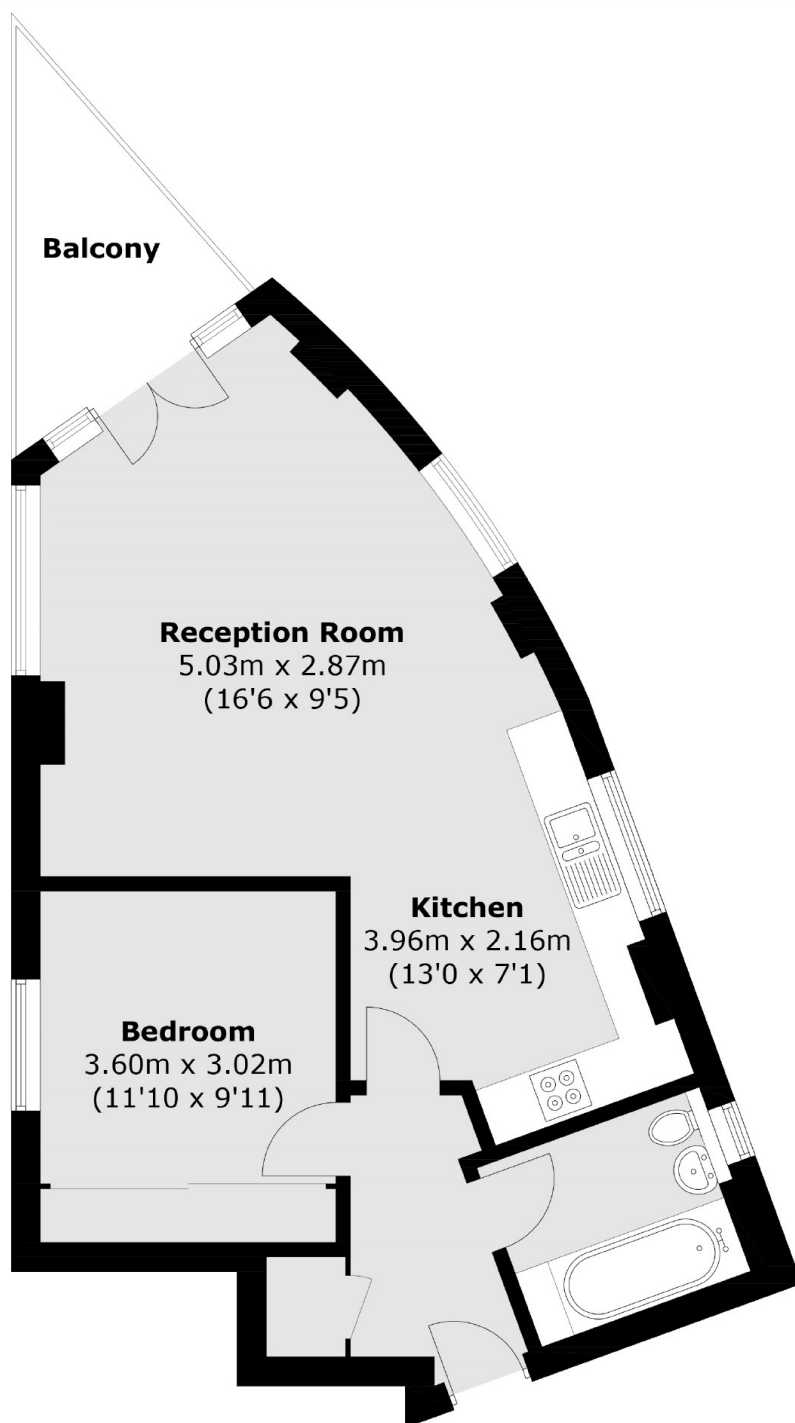
A one double bedroom, warehouse style apartment based just off Broadway Market. The property has an industrial feel to it, concrete ceilings and floor to ceiling windows and also has an open plan living kitchen area and ample storage throughout. The property also benefits from a private south facing balcony, communal roof terrace, bike storage and a parking space.

Located at the end of Broadway Market and all of its amenities and just a short walk away from London Fields Park and The Regents Canal. The property also has great transport links in and around the City with London Fields, Bethnal Green and Cambridge Heath Stations all within waling distance.

### Features

- Open Plan
- High Ceilings
- Ample Storage
- Parking Space
- Bike Storage
- Broadway Market

# Pritchards Road, London, E2



Total area (approx.): 54.2 sq. m (583.4 sq. ft)  
Balcony: 5.3 sq. m (57.0 sq. ft)