



## Livermere Road, E8

### £420,000

**CASH BUYERS.** A fully renovated split-level apartment close to Regents Canal. Bespoke kitchen, separate living room with reclaimed wooden flooring. Two double bedrooms on the upper floors with built-in wardrobe and bathroom with underfloor heating.

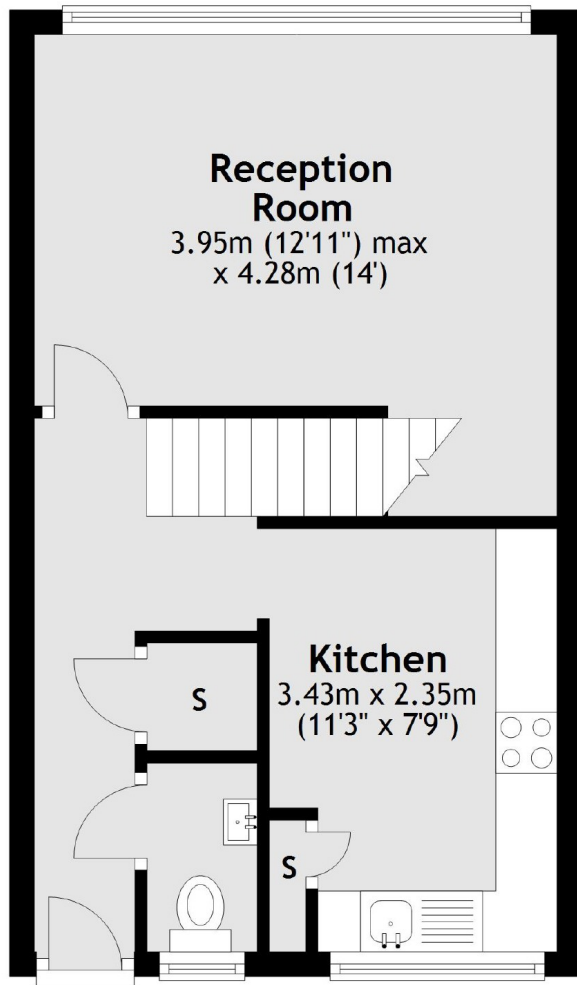
Popular London Fields, Broadway Market, Dalston, De Beauvoir, Columbia Road Market and Haggerston Park all less than half a mile away. Haggerston Station overground just 0.1m away and the bus links of Kingsland Road provide easy access to Liverpool Street, City and London Bridge.

### Features

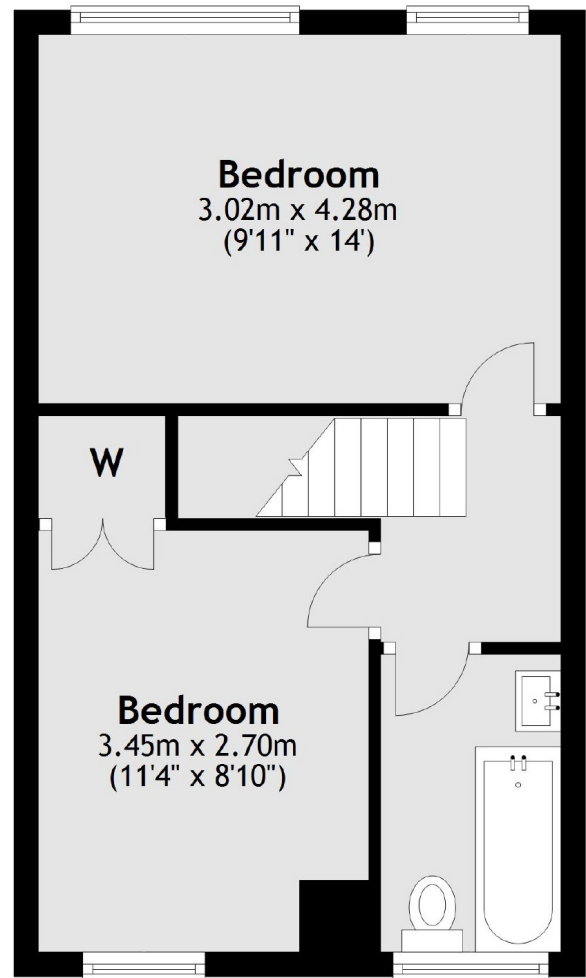
- Ideal For Investors
- Chain Free
- Two Double Bedrooms
- Modern Fittings
- Separate Living Room
- Regents Canal
- Haggerston Station

# Livermere Road, London, E8

## First Floor



## Second Floor



Total area: approx. 64.2 sq. metres (691.5 sq. feet)