



King Edward's Road, E9

£657 Per week

A beautifully presented converted warehouse apartment on the ever popular King Edward's Road development. This unique property has two bedrooms, a mezzanine area, high ceilings and lets in lots of natural light. An off street secure parking space is also included in with this apartment.

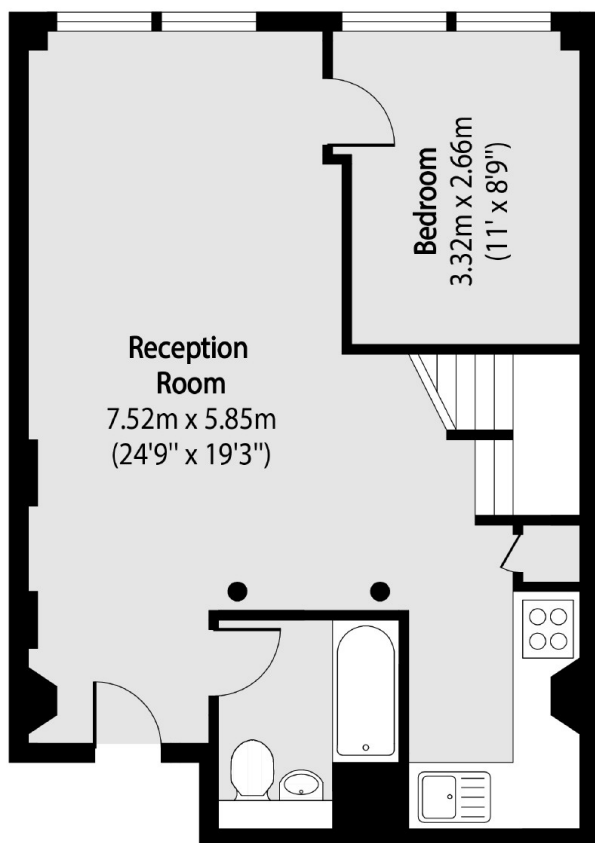
Perfect location just off Mare Street within easy reach of London Fields, Broadway Market and Victoria Park Village, close to all local shops, cafés and restaurants.

Features

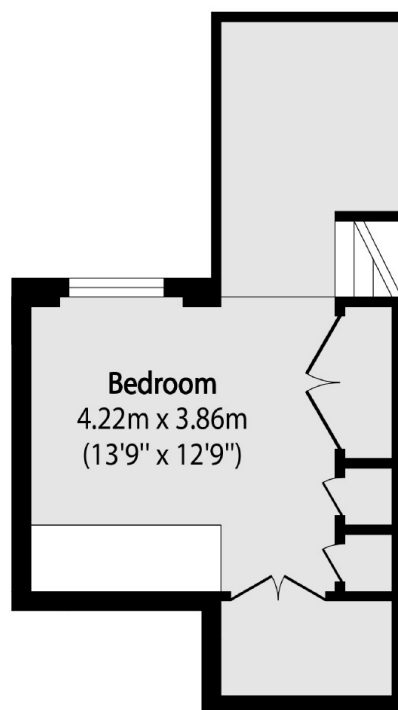
- No Pets Allowed
- 691 Sq ft
- Two Bedrooms
- Mezzanine Area
- Parking Space
- Unfurnished

King Edward's Road, London, E9

Second Floor



Third Floor Mezzanine



Total area (approx): 66.09 sq m (711 sq. ft)