



Goldsmiths Row, E2

£885,000

A four double bedroom apartment with a large private freehold garden. This apartment offers open plan living and offers ample space for dining as well as having a newly renovated kitchen. This property measures in excess of 1350 sqft foot, has a new bathroom, residents parking, access to the garden can be found via three of four bedrooms or a private side gate.

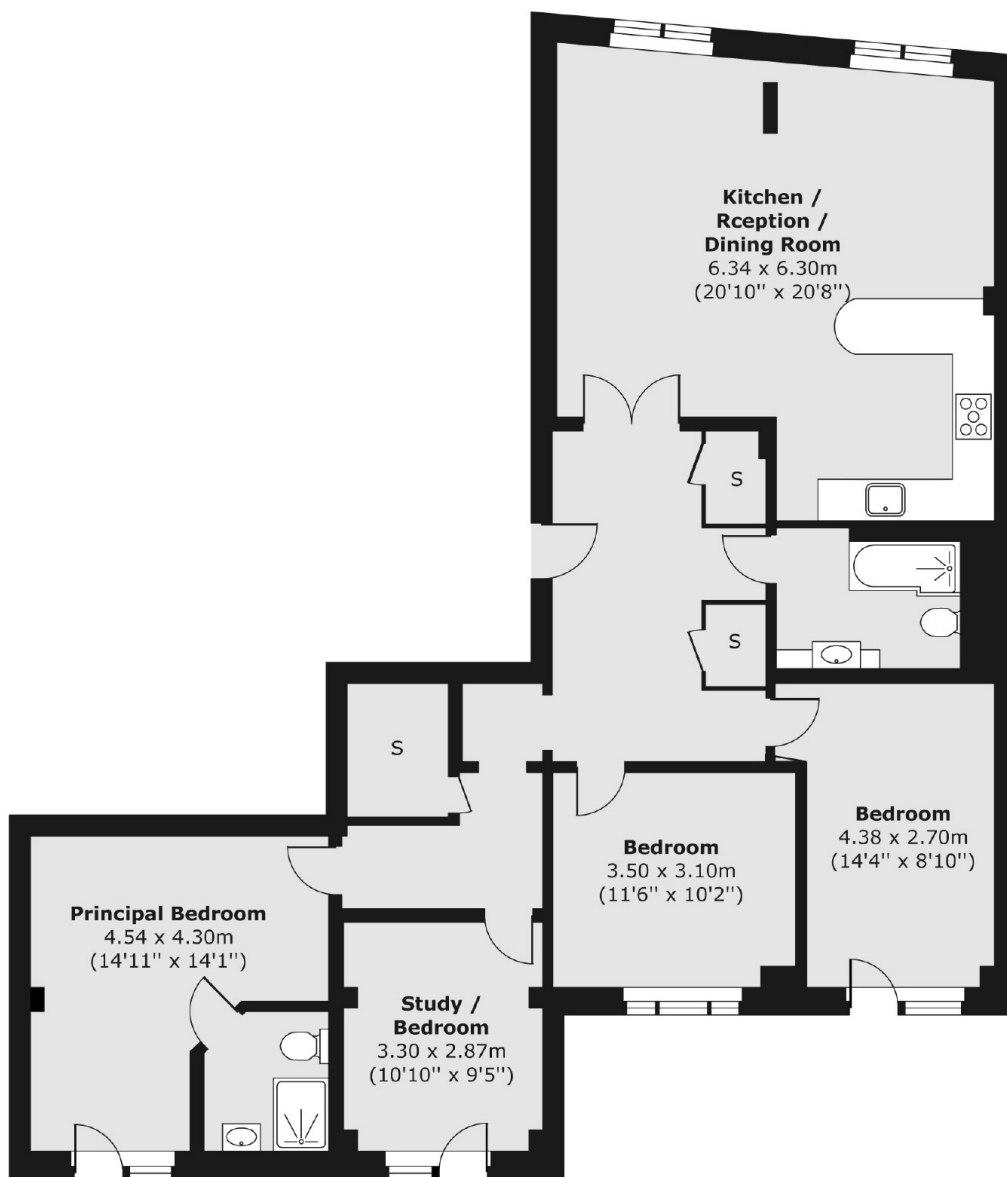
Located on Broadway Market with its abundance of bars, cafés and restaurants leading up to London Fields. Bethnal Green tube station is less than a mile away, as well as close access to many bus routes from Hackney Road through to the City and West End.

Features

- Four Double Bedrooms
- Two Bathrooms
- 1,355 Square Feet
- Private Garden
- Bike Storage
- Resident Parking

Goldsmiths Row, London, E2

Ground Floor



Total area (approx.) 125.89 sq. m (1,355 sq. ft)