



## Tudor Road, E9

£692 Per week

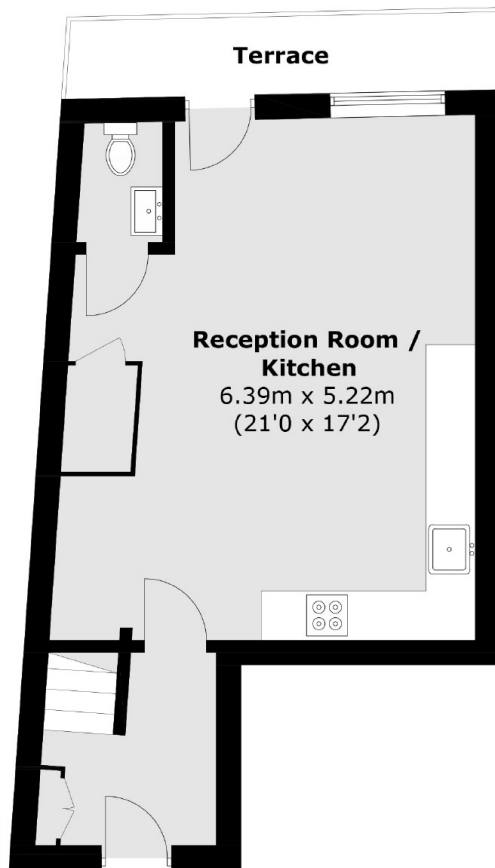
A one double bedroom penthouse warehouse apartment in the heart of Hackney. Split over two floors, the apartment has a open plan reception with high ceilings, two private terraces and floor to ceiling windows with an abundance of light.

Situated between the greens of Victoria Park and London Fields which leads onto Broadway Market with its many pubs, restaurants and cafes. London Fields overground station is a short walk away for easy access to the City.

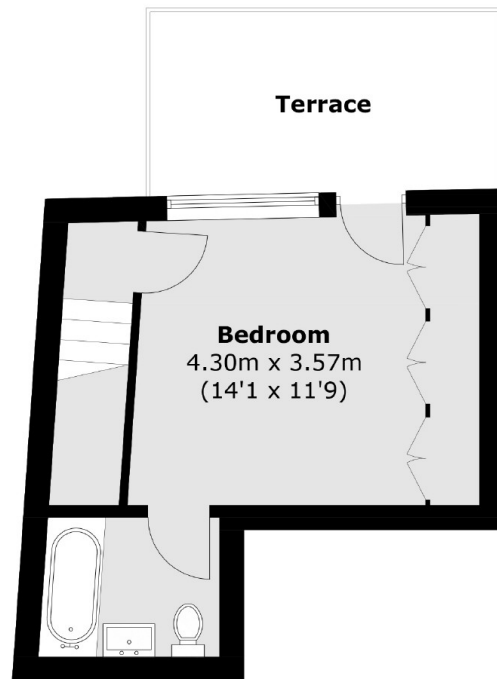
### Features

- One Double Bedroom
- Penthouse
- Open Plan
- Warehouse Style
- Wooden Flooring
- Two Private Terraces

# Tudor Road, London, E9



**Third Floor**



**Fourth Floor**

Total area (approx.): 58.9 sq. m (635.0 sq. ft)  
Terrace: 14.3 sq. m (153.9 sq. ft)