



## King Edward's Road, E9

£600 Per week

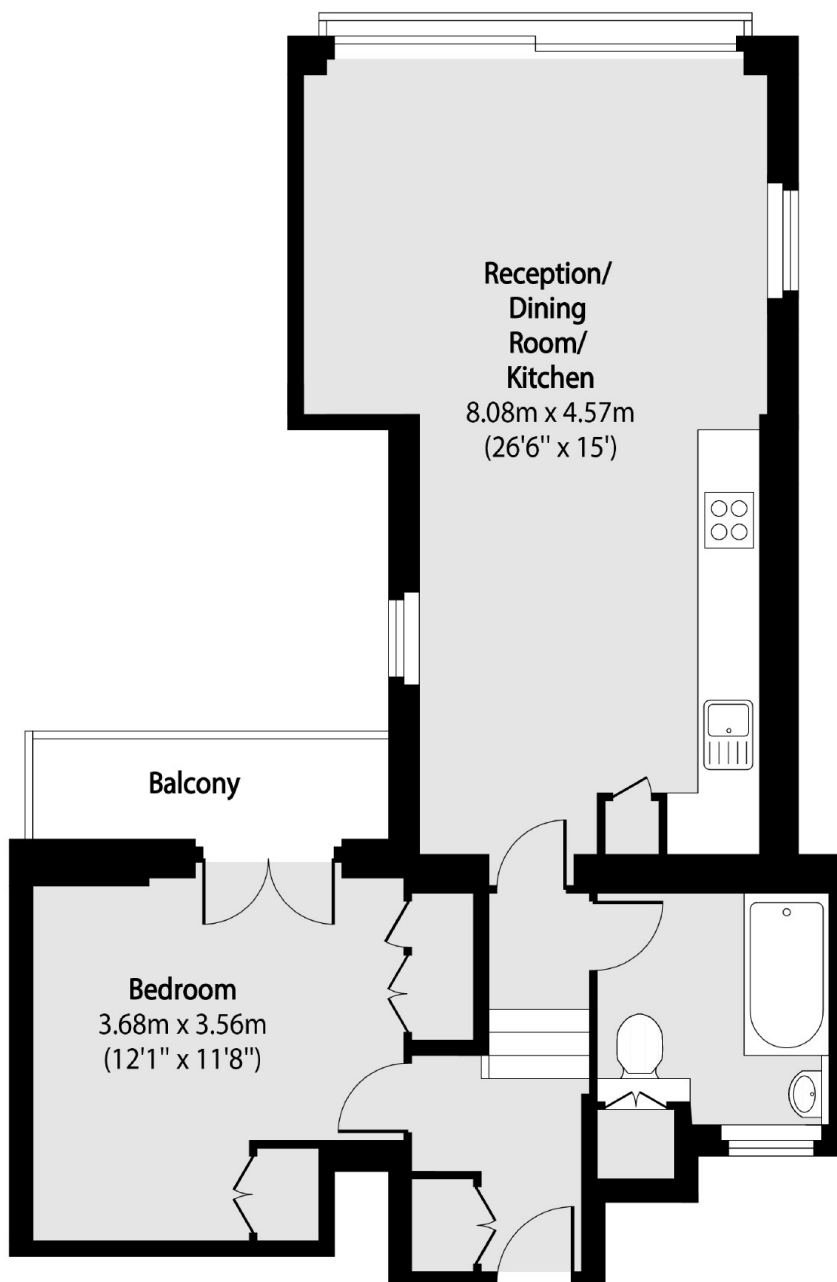
A beautifully presented one bedroom apartment on the raised ground floor of a period townhouse. The property features a spacious open plan kitchen/living space, a double bedroom with a private balcony which comes furnished.

King Edward's Road is on one of East London's vibrant corners with Broadway Market, London Fields and Victoria Park less than half a mile away. Transport Links include London Fields overground, Bethnal Green Station and many bus route options.

### Features

- One Double Bedroom
- Period Conversion
- Open Plan
- Wooden Flooring Throughout
- Private Balcony
- Furnished

# King Edward's Road, London, E9



Total area (approx): 56.76 sq m (611 sq. ft)

Balcony total area (approx): 3.43 sq m (37 sq. ft)