



## Lee Street, E8

£585,000

Located on the raised first floor, this apartment has an open plan kitchen/living area with large balcony and built-in appliances, two double bedrooms with the principal bedroom benefitting from an en-suite and ample built-in storage throughout. The property has light in abundance due to the floor to ceiling windows throughout and further benefits from access to communal garden.

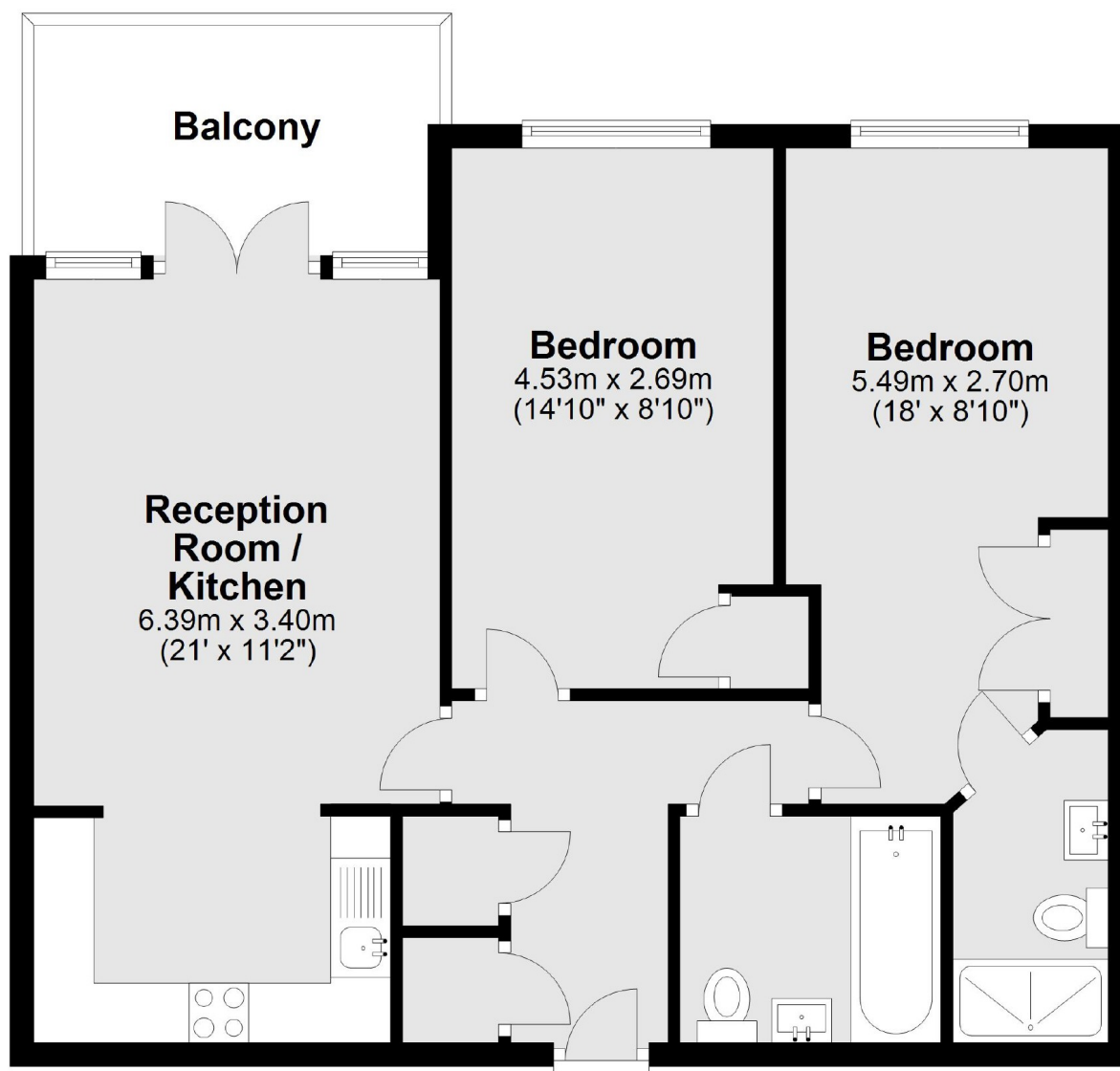
City Mills is within walking distance to Shoreditch, Liverpool Street, Dalston, London Fields, Broadway Market and Victoria Park as well as the ever popular Columbia Road, Brick Lane and Regents Canal. Haggerston Overground station is under 150 metres away and provides quick and easy access to the City and West End. Bus routes into the City and Shoreditch are also nearby.

### Features

- Chain Free
- Private Balcony
- Communal Garden
- Secure Bike Storage
- Underground Car Park
- Concierge
- EWS1 Form

Lee Street,  
London, E8

## First Floor



Main area: Approx. 63.5 sq. metres (683.4 sq. feet)  
Plus balconies, approx. 6.9 sq. metres (74.2 sq. feet)