



Goldsmiths Row, E2

£657 Per week

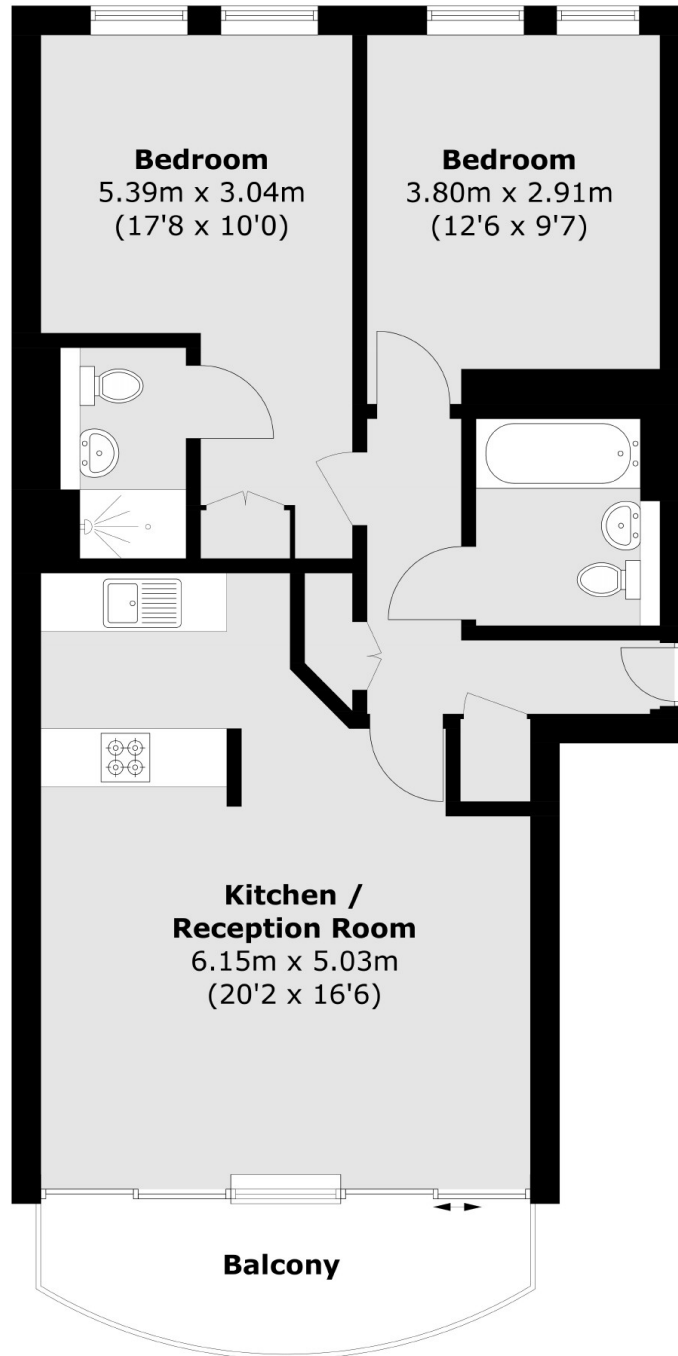
A large two double bedroom, two bath apartment on Goldsmiths Row. This apartment has an open plan reception room, floor to ceiling windows leading on a large private balcony over looking Hackney City Farm.

Goldsmith Row has quickly developed into one of the most modern and popular location for residents looking for accommodation adjoining Broadway Market, Columbia Road and London Fields Lido.

Features

- Two Double Bedroom
- Two Bathroom
- Open Plan
- Private Balcony
- Wooden Flooring
- Unfurnished

Goldsmiths Row, London, E2



Total area (approx.): 69.0 sq. m (742.7 sq. ft)
Balcony area: 6.7 sq. m (72.1 sq. ft)