



## Cadogan Terrace, E9

£576 Per week

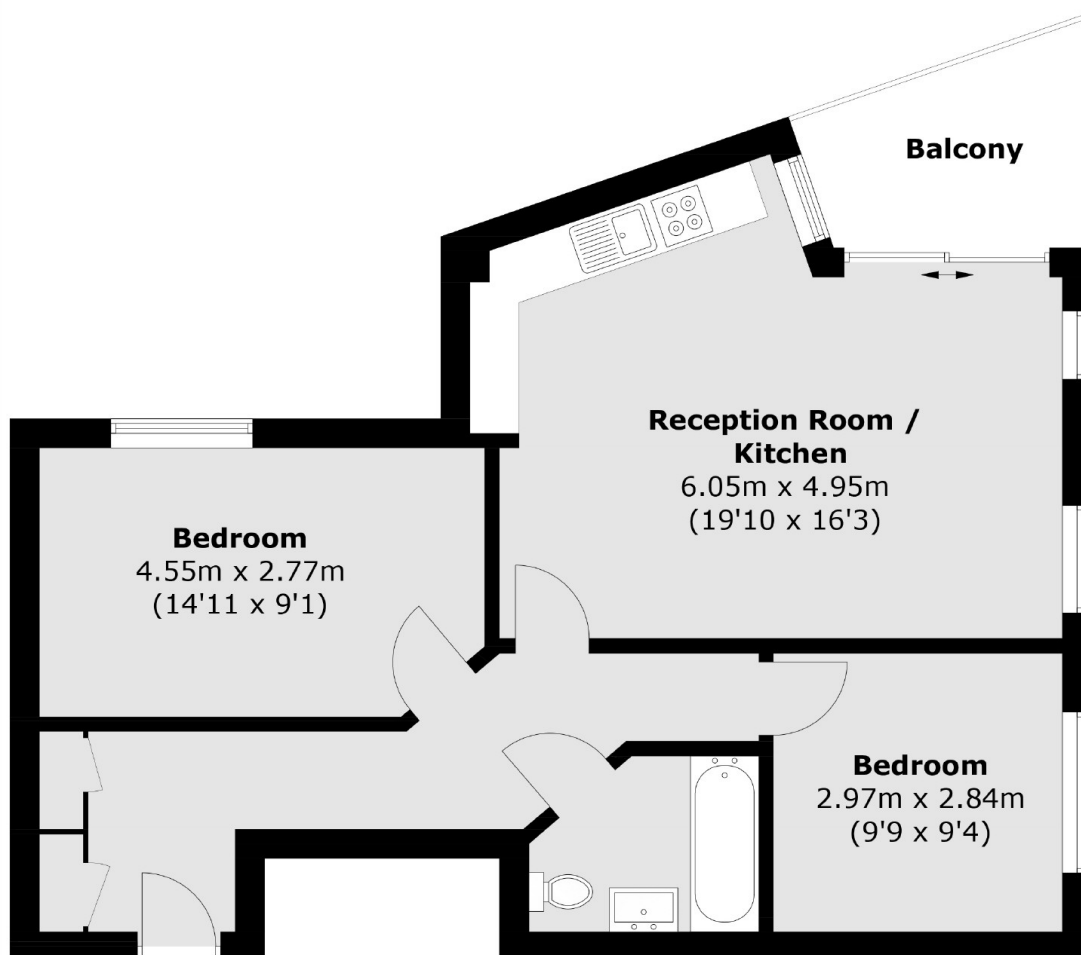
A two double bedroom apartment in a modern block opposite Victoria Park. The property has a dual aspect open plan kitchen/living area with wooden flooring throughout and a private balcony over looking the canal and Victoria Park.

Situated opposite Victoria Park and close to the local amenities that Victoria Park Village has to offer. Queen Elizabeth Olympic Park is also a short walk away with it's legacy facilities as well as Hackney Wick station being less than a mile away.

### Features

- Two Double Bedroom
- Second Floor
- Private Balcony
- Wooden Flooring
- Over Looking Victoria Park
- Canal Views

# Cadogan Terrace, London, E9



## Second Floor

Total area (approx.): 62.1 sq. m (668.4 sq. ft)  
Balcony area (approx.): 5.2 sq. m (55.9 sq. ft)