



Taylor Place, E3

£398 Per week

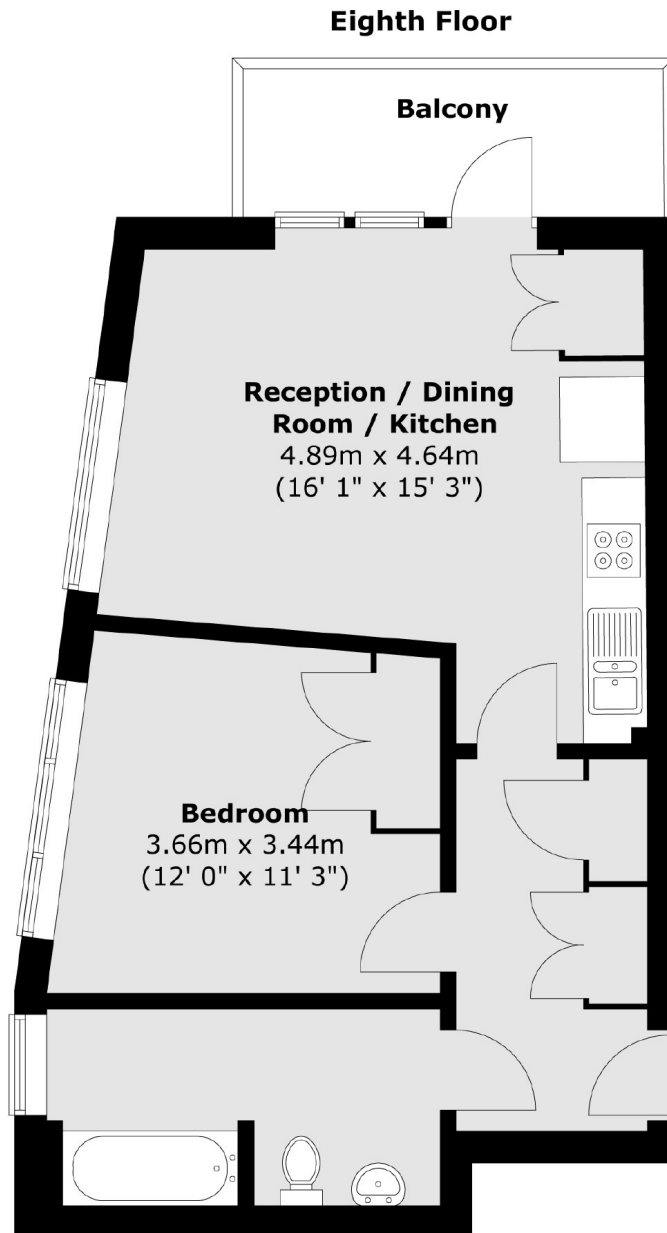
A spacious one bedroom apartment in Fondant Court. This property has floor to ceiling windows allowing an abundance of natural light throughout that lead onto a balcony, a good size open plan reception and an on site concierge.

Central location within easy reach of Bow, Stratford, Hackney Wick and Victoria Park for all local shops, restaurants and cafés.

Features

- One Double Bedroom
- Concierge
- Balcony
- Skyline views
- Modern Development
- Furnished

Taylor Place, London, E3



Total area (approx.) : 46.8 sq. m (504 sq. ft)
Total balcony area (approx.) : 5.5 sq. m (59 sq. ft)