



Roach Road, E3

£575,000

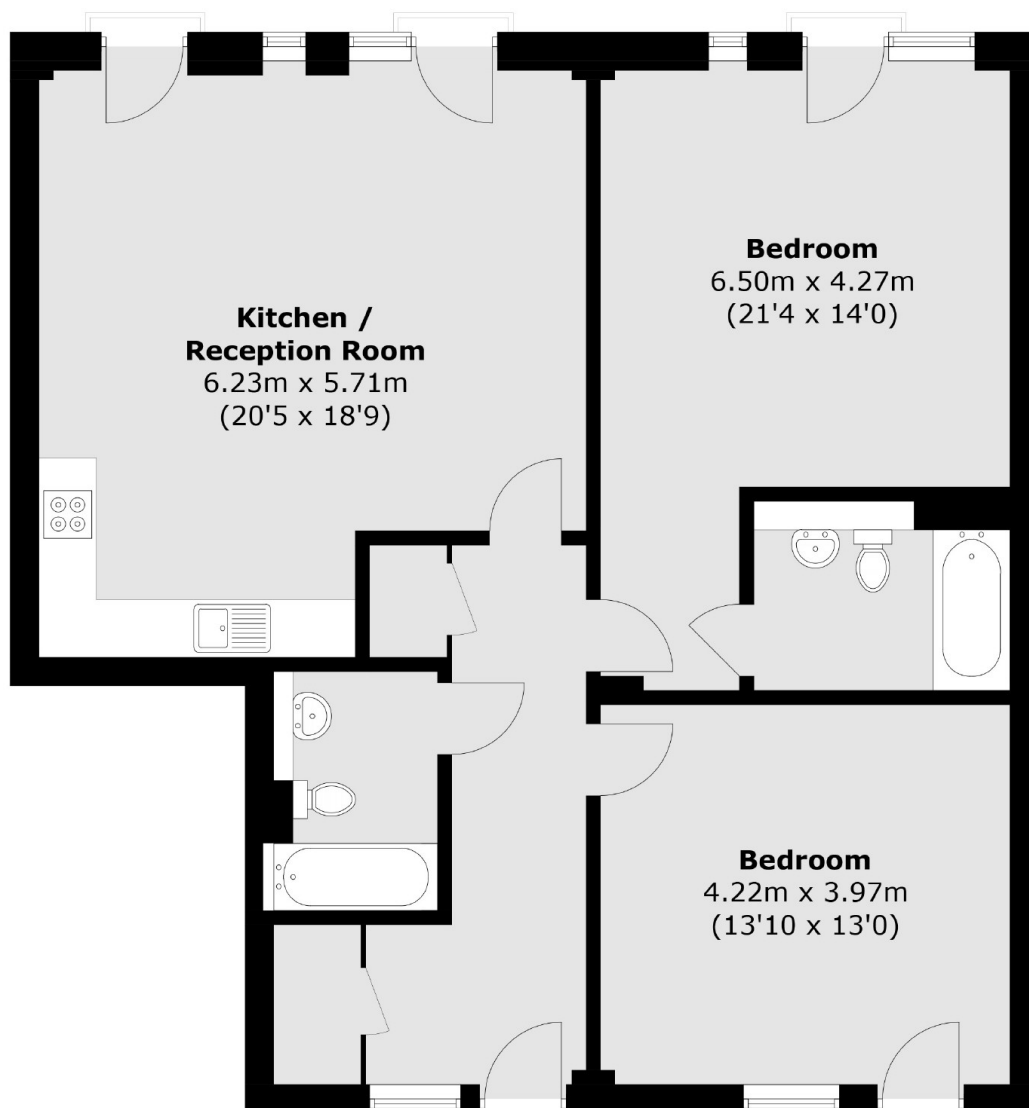
A two double bedroom apartment that measures in excess of 1000 square foot. Located within a secure development, this property offers an open plan living, kitchen and dining area with doors open out onto separate Juliette balconies, letting in and abundance of light. There is a large principle bedroom with ample space for storage and spacious front hallway, as well as underfloor heating.

Omega works is situated on the corner of the Hertford Union Canal and the Lea Canal in the Hackney Wick area. This property has an abundance of Popular eateries, cafés and bars on its doorstep. The closes station is Hackney Wick on the overground offering great transport to the rest of north and east London.

Features

- Two Double Bedrooms
- Over 1000 Sqft
- Open Plan Living
- Secure Development
- Close to Canal
- Local Amenities

Roach Road, London, E3



Total area (approx.): 98.0 sq. m (1054.8 sq. ft)

Dexters

Hackney
10 Broadway Market
London
E8 4QJ
Sales
0207 247 2440

Energy Rating: B. We aim to make our particulars both accurate and reliable. However they are not guaranteed; nor do they form part of an offer or contract. If you require clarification on any points then please contact us, especially if you're traveling some distance to view. Please note that appliances and heating systems have not been tested and therefore no warranties can be given as to their good working order.

 **RICS** | Regulated
Estate Agent
and Letting Agent

[dexters.co.uk](https://www.dexters.co.uk)