



Roach Road, E3

£650,000

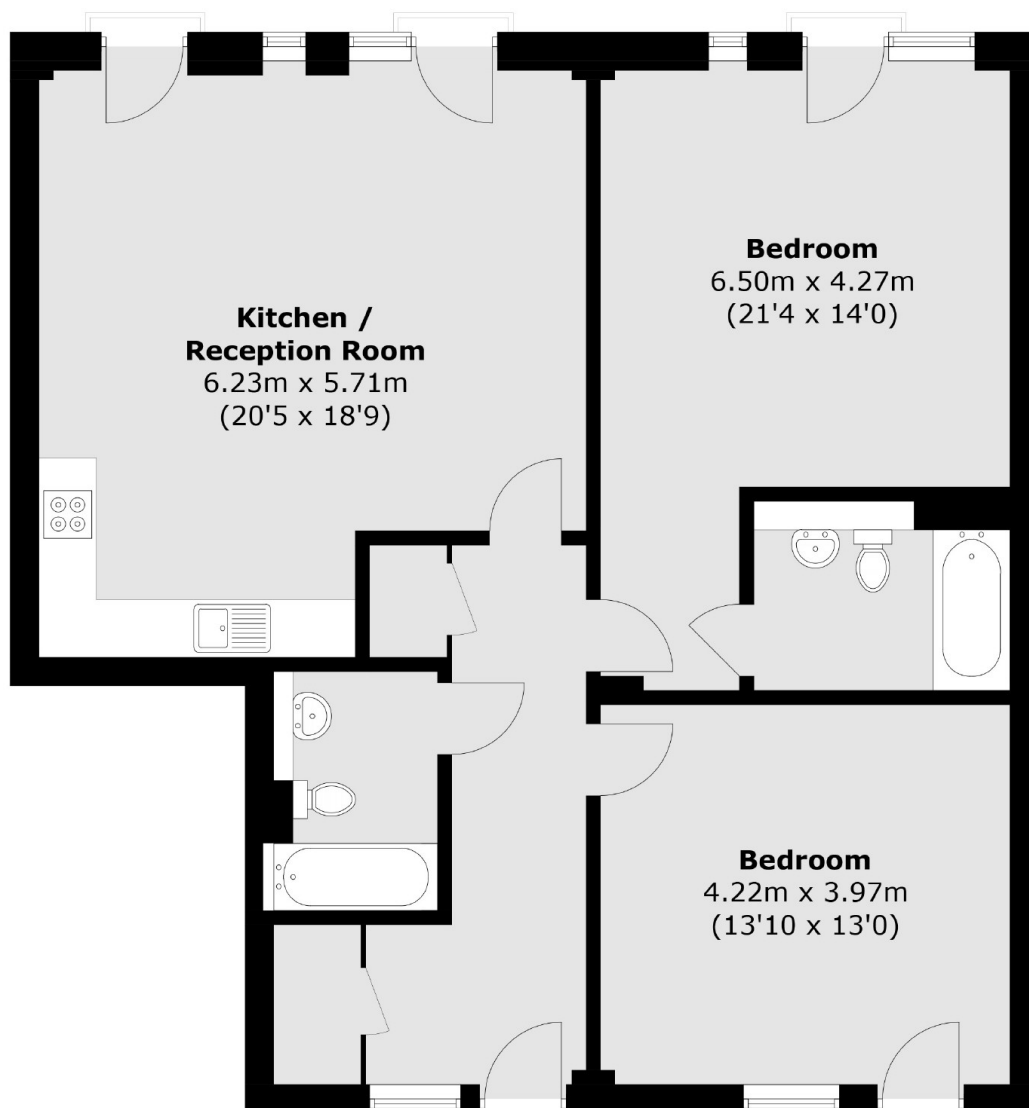
A two double bedroom apartment that measures in excess of 1000 square foot. Located within a secure development, this property offers an open plan living, kitchen and dining area with doors open out onto separate Juliette balconies, letting in and abundance of light. There is a large principle bedroom with ample space for storage and spacious front hallway, as well as underfloor heating.

Omega works is situated on the corner of the Hertford Union Canal and the Lea Canal in the Hackney Wick area. This property has an abundance of Popular eateries, cafés and bars on its doorstep. The closes station is Hackney Wick on the overground offering great transport to the rest of north and east London.

Features

- Two Double Bedrooms
- Over 1000 Sqft
- Open Plan Living
- Secure Development
- Close to Canal
- Local Amenities

Roach Road, London, E3



Total area (approx.): 98.0 sq. m (1054.8 sq. ft)