

Portia Way, E3

£657 Per week

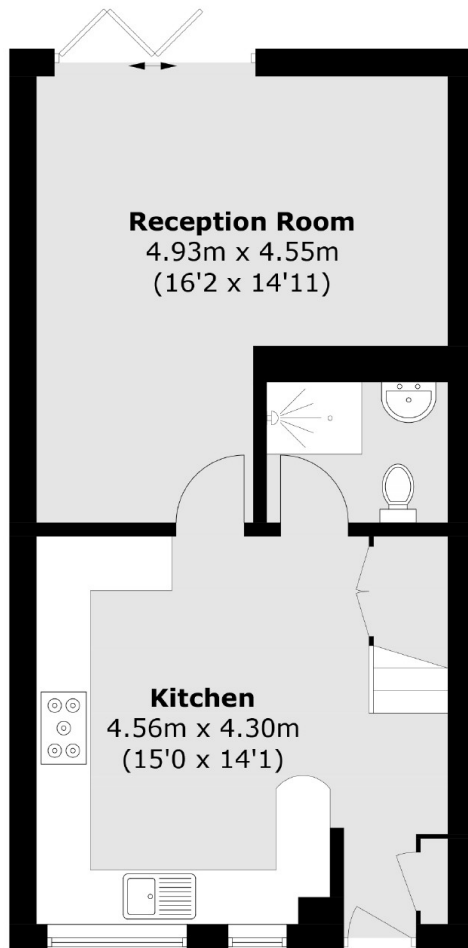
A large three double bedroom maisonette in the heart of Bow. This property comes with a fully fitted separate kitchen, two bathrooms, private garden which comes furnished with parking if required.

Amazing location close to the Mile End park, Canary Wharf, Victoria Park and Bow for all local shops, bars and restaurants.

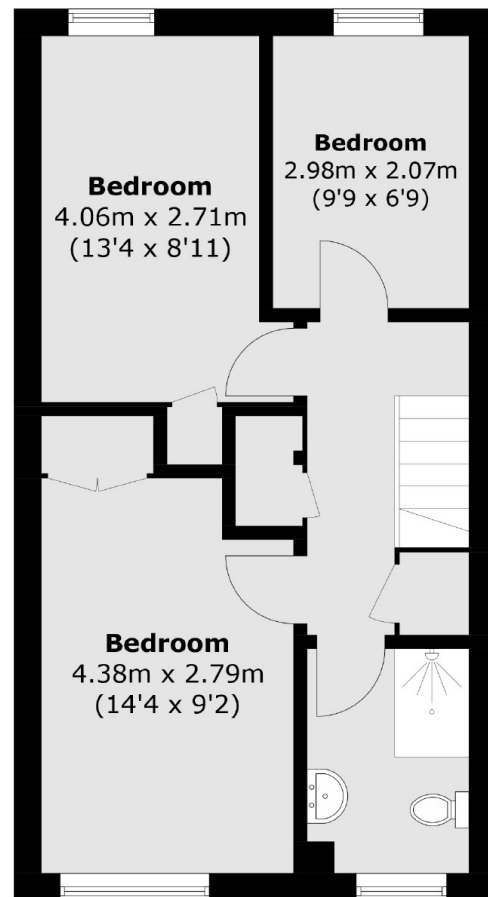
Features

- NO HMO LICENSE
- Three Double Bedroom
- Two Bathroom
- Furnished
- Private Garden
- Parking

Portia Way, London, E3



Ground Floor



First Floor

Total area (approx.): 87.1 sq. m (937.5 sq. ft)