

Mentmore Terrace, E8

£1,096 Per week

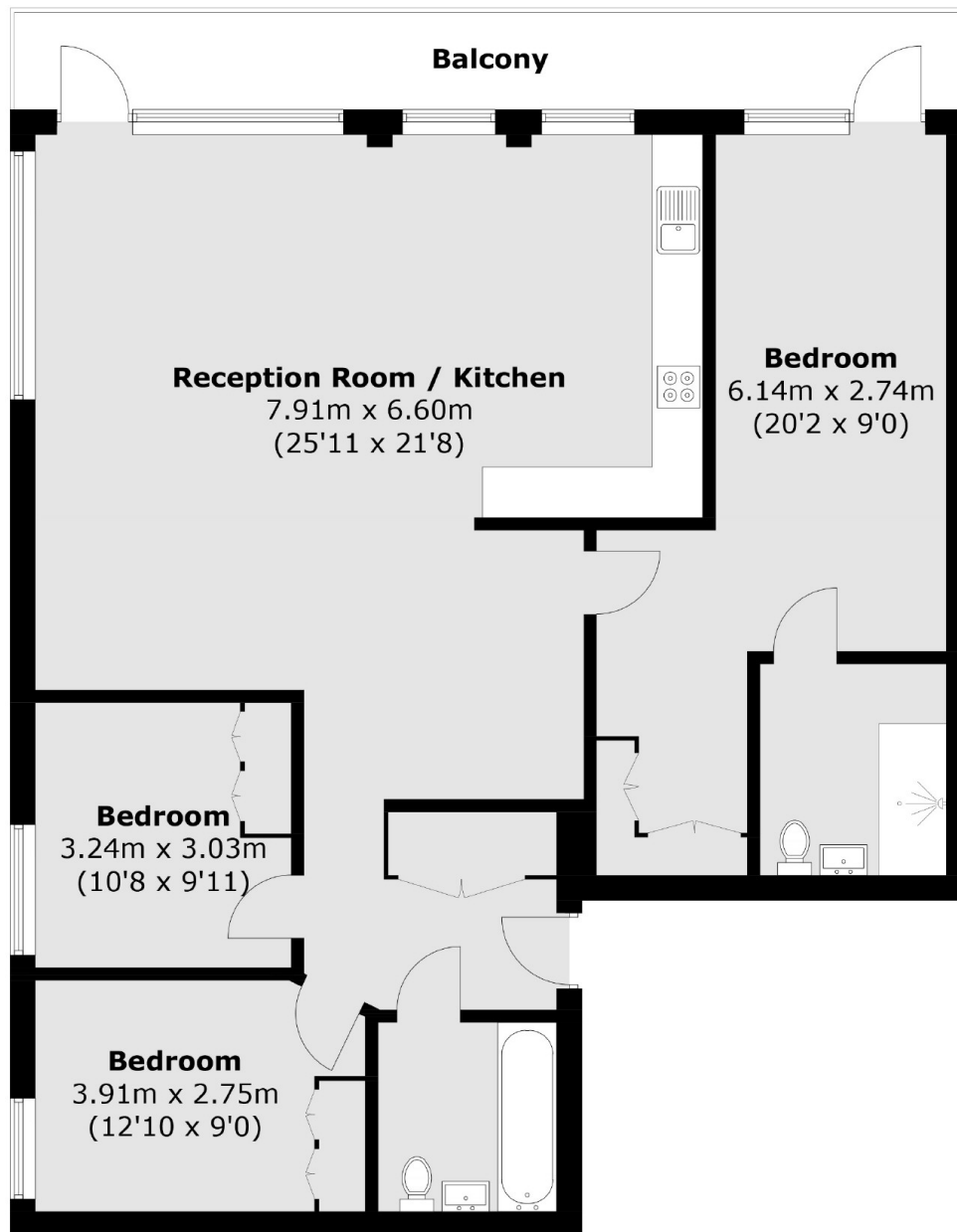
A brand new three double bedroom penthouse apartment in Fieldsview Building. This spacious seventh floor property comes with three double bedrooms, two bathrooms, open plan kitchen overlooking the City, Canary Wharf and London Fields.

Amazing location with easy reach of London Fields and Broadway markets for all local shops, bars and restaurants.

Features

- Penthouse Apartment
- Three Double Bedrooms
- Two Bathroom
- Open Plan
- Amazing Views
- Concierge, Gym & Cinema

Mentmore Terrace, London, E8



Total area (approx.): 120.2 sq. m (1,293.8 sq. ft)
Balcony (approx.): 13.0 sq. m (139.9 sq. ft)