



Wick Lane, E3

£500,000

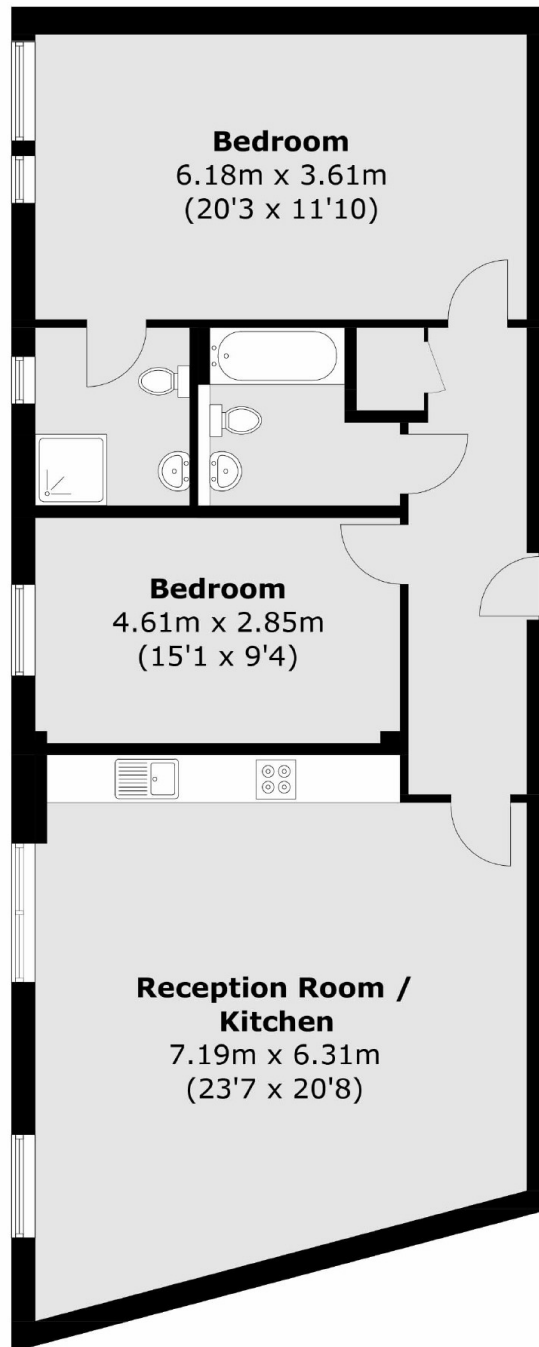
A two double bedroom, two bathroom apartment with over 1,000 sqft of living space. This chain free property has floor to ceiling windows throughout allowing plenty of natural light, a large open plan living area and two modern bathrooms.

Situated between the greens of Queen Elizabeth Olympic Park and Victoria Park. Hackney Wick overground station is also close by as well as Westfield Shopping centre across the park.

Features

Offer In Excess Of
Available Chain Free
Two Double Bedrooms
Two Bathrooms
Floor to Ceiling Windows
Queen Elizabeth Olympic Park

Wick Lane, London, E3



Total area (approx.): 95.8 sq. m (1031.2 sq. ft)