



## Beechwood Road, E8

£675,000

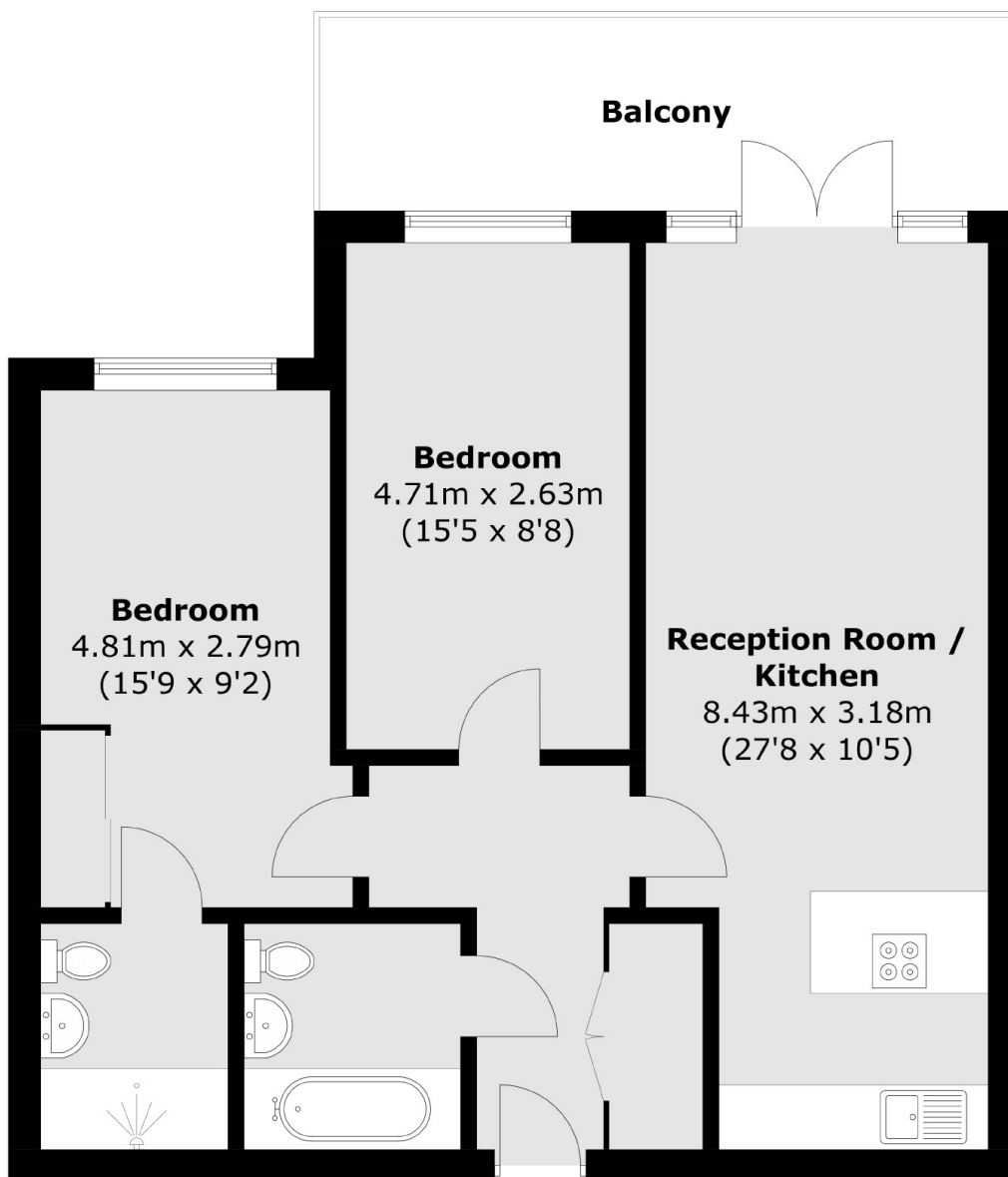
A spacious, modern two double bedroom flat on the 8th floor with uninterrupted views over London. This property boasts two large bathrooms, a generous reception/dining room with a fully integrated open plan kitchen, and a private west-facing balcony. Additional amenities include a communal rooftop, a gym, and a concierge service.

Ideally located, it's just 160m to Dalston Junction Overground or under half a mile to Dalston Kingsland, providing easy access to Shoreditch, Islington, and the City. The area's many shops, bars, cafes, and restaurants are right on your doorstep.

### Features

Offers In Excess Of  
EWS1 Form Available  
Two Bathrooms  
Concierge & Gym  
Private Balcony  
City Views  
Roof Terrace

# Beechwood Road, London, E8



Total area (approx.): 70.6 sq. m (760.0 sq. ft)  
Balcony : 11.6 sq. m (124.9 sq. ft)