

Stanton Walk, E2

£700,000

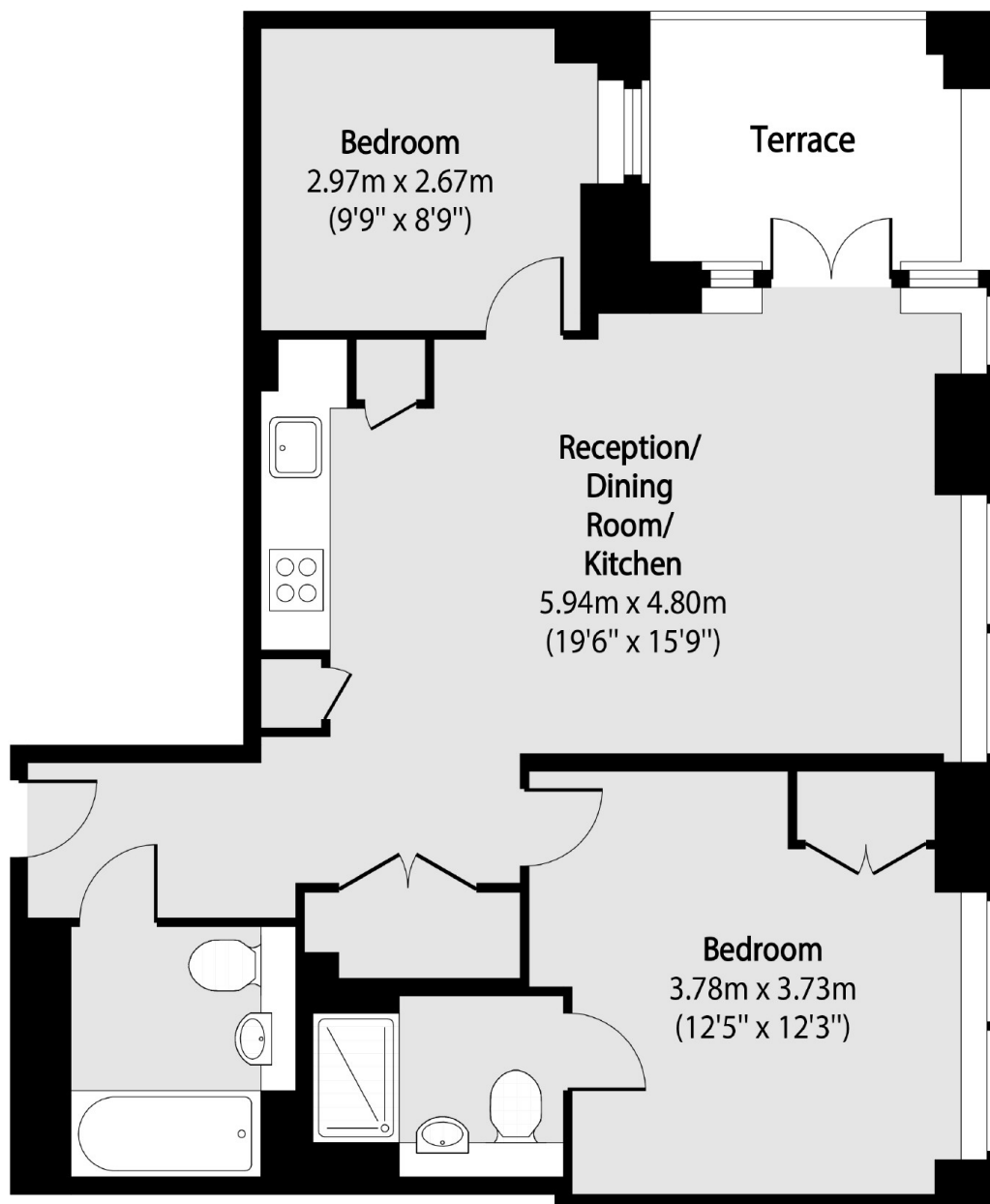
A wonderfully bright two bedroom flat that has been finished to the highest of standards and offers generous dimensions throughout. The open-plan reception room and kitchen offers a perfect entertaining space opening up on to the private balcony. The apartment also comes with a communal roof terrace, 24 hour gym and concierge.

Located on Regent's Canal and around the corner from Broadway Market. Stanton Walk is in one of the most exciting areas in East London, with an abundance of local amenities and London Fields Park nearby.

Features

- Private Balcony
- Two Bathrooms
- Communal Roof Terrace
- 24 Hour Gym
- London Fields
- Broadway Market
- Regent's Canal

Stanton Walk, London, E2



Total area (approx): 61.13 sq m (658 sq. ft)

Terrace total area (approx): 5.85 sq m (63 sq. ft)