



Victoria Park Road, E9

£1,975,000

Dexters



Victoria Park Road, E9

A four double bedroom end of terrace house, spread across three floors directly opposite Victoria Park. This property benefits from a private garden with a studio, an extended kitchen/ dining space and a parking space on the driveway.

Entering the property, to the left is a well sized and bright reception room, offering built in shelves, a fireplace and views overlooking the park from a beautiful bay window maintaining the features of a period property. Also on this level is a separate WC before you are greeted by the spacious kitchen area, which has sky lights and floor to ceiling sliding doors looking out into the well maintained and landscaped garden, making for a bright and airy feel. Moving on upstairs you have three bedrooms and the family bathroom. One of the bedrooms has an en-suite and a Juliet balcony as well as a large bay window again benefiting from the views of the park. On the top floor, there has been a loft conversion which offers the fourth bedroom with an en suite and dual aspect views as well as a generous storage area.

This house is located on Victoria Park Road, directly opposite the park and just a short walk away from the popular village with an abundance of popular independent shops, delis and restaurants. There is great bus links on this road and the nearest stations are Homerton and Hackney Wick just over half a mile walk making for great transport links in and around The City.

Features

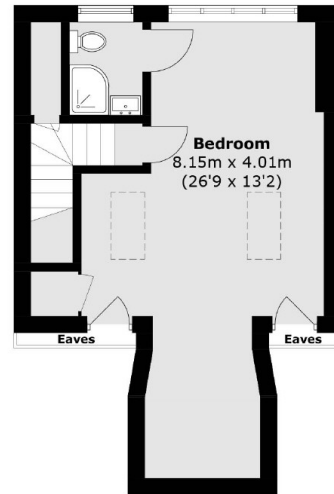
- Four Double Bedrooms
- Side Conversion
- Loft Conversion
- Private Garden
- Garden Studio
- Victoria Park



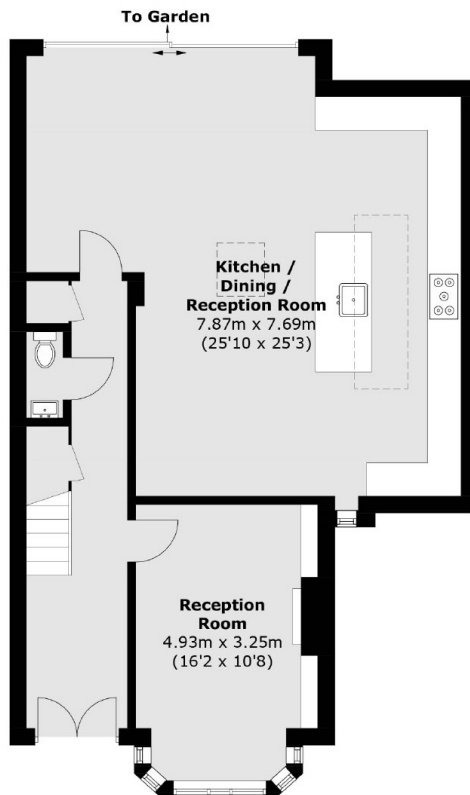




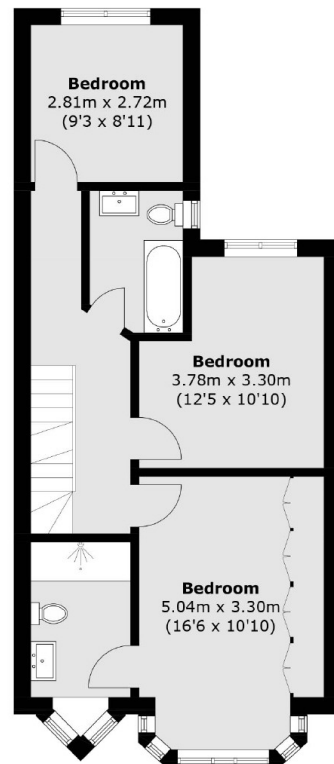
Victoria Park Road, London, E9



Second Floor



Ground Floor



First Floor

Total area (approx.): 171.8 sq. m (1849.2 sq. ft)
(Excluding Eaves)