



## Beanacre Close, E9

£730,000

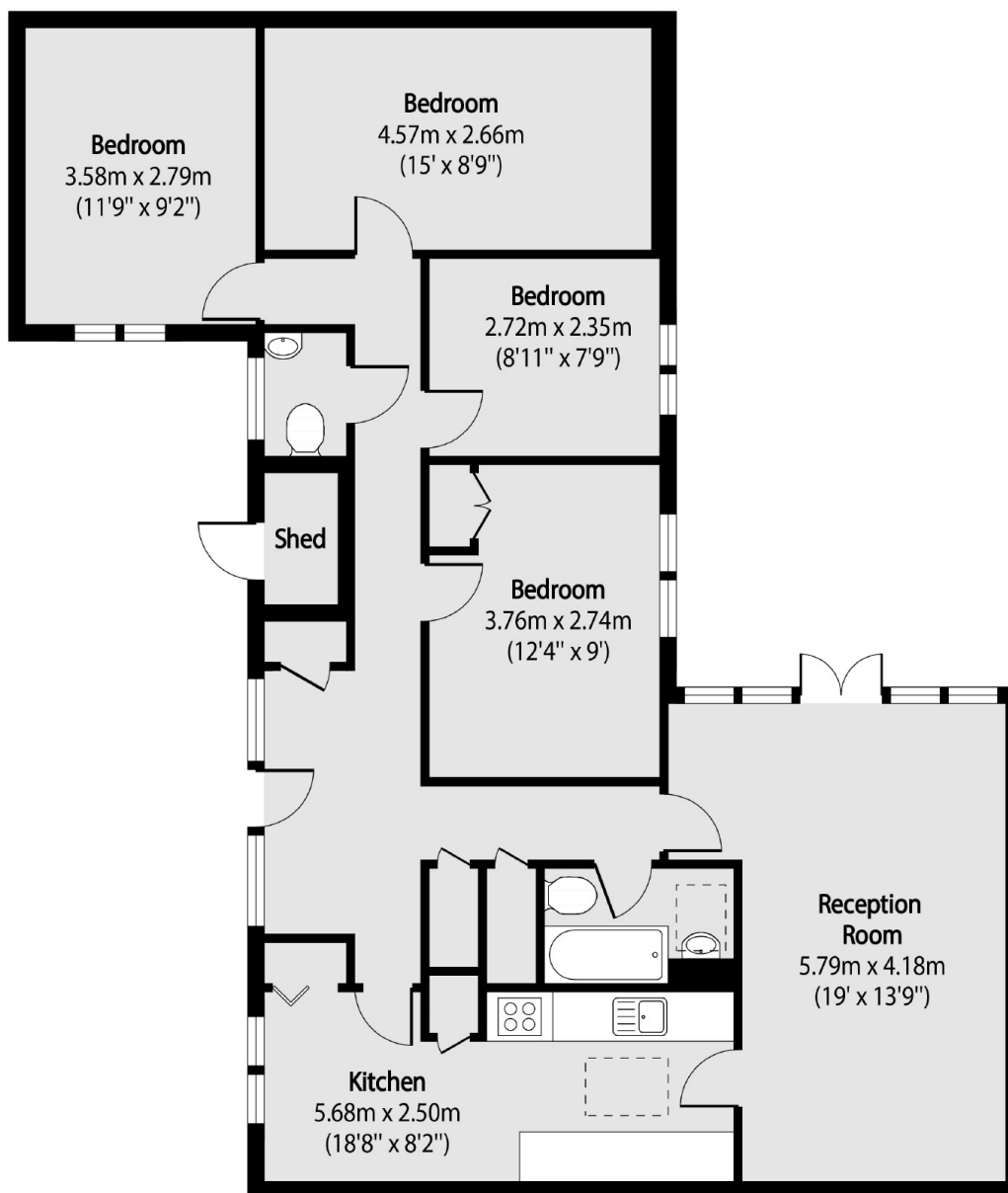
A four double bedroom bungalow measuring over 1000 sq ft within the sought after Trowbridge Estate. The property has a secluded south east facing private garden, galley kitchen, ample storage and private entrance.

Beanacre Close is located between Victoria Park, Hackney Marshes and the River Lea. Hackney Wick Overground is under half a mile and both Homerton and Stratford International are under one mile away. The many cafes and shops of Hackney Wick and Stratford are within walking distance.

### Features

- Four Double Bedrooms
- Freehold Bungalow
- Residents Parking Available
- Private Garden
- Victoria Park

# Beanacre Close, London, E9



Total area (approx): 99.52 sq m (1071 sq. ft)