

Waterside Close, E3

£525,000

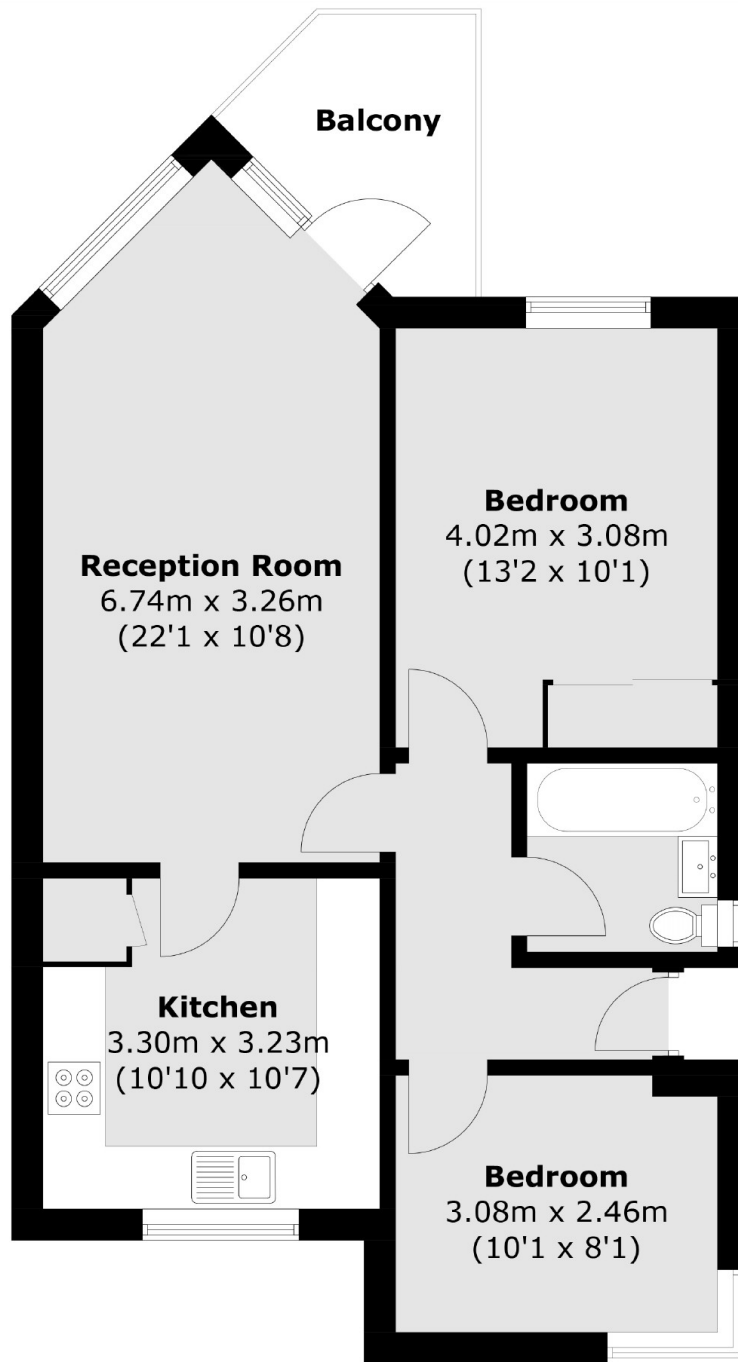
A two bedroom lateral apartment with private balcony overlooking the regents canal and victoria park. This apartment has a large separate kitchen, living room with space to dine and door out onto the balcony with room for table and chairs. It is being offered chain free.

Located next to the regents canal and a quarter of a mile from Roman Road, this property has an abundance of cafes, shops and eateries close by. The nearest station is Mile end just over half a mile away on the Central line, District line and Hammersmith and city.

Features

Two Double Bedrooms
Modern
Lateral Space
Chain Free
Balcony Overlooking Canal
Overlooking Victoria Park

Waterside Close, London, E3



Total area (approx.): 60.2 sq. m (648.0 sq. ft)
Balcony: 4.8 sq. m (51.7 sq. ft)