



Wyke Road, E3

£575,000

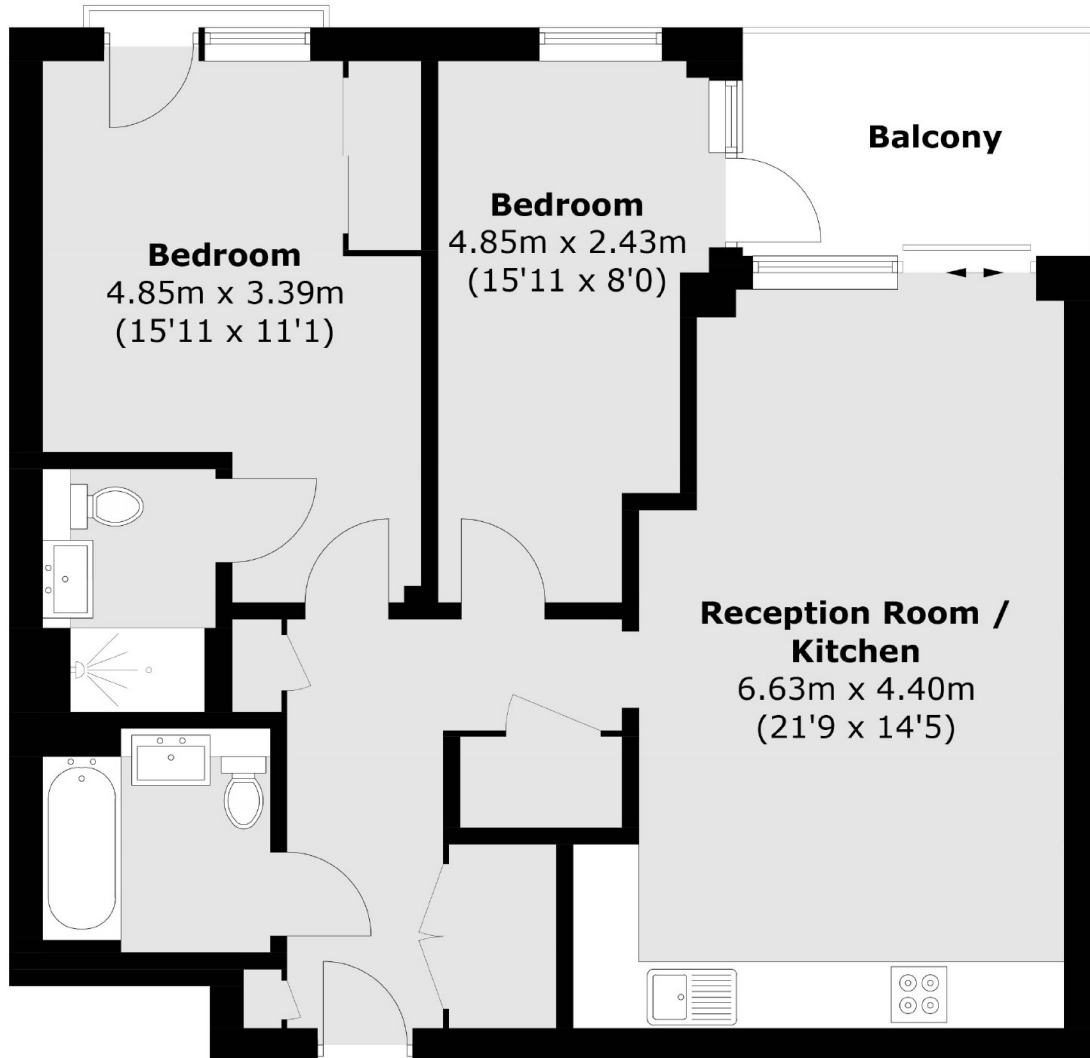
A modern two double bedroom, two bathroom apartment located in one of East London's most vibrant areas Hackney Wick. This property benefits from floor to ceiling sliding doors leading out onto a balcony, an open plan living kitchen area and the development offers a gym, bike storage and concierge.

The property is located a short walk from the greeneries of Queen Elizabeth Olympic Park and Victoria Park. Hackney Wick overground station is also close by as well as Westfield Shopping centre across the park.

Features

- Two Double Bedrooms
- Two Bathrooms
- Open Plan
- Dual Aspect
- Concierge & Gym
- Hackney Wick

Wyke Road, London, E3



Total area (approx.): 72.2 sq. m (777.2 sq. ft)
Balcony area (approx.): 6.3 sq. m (67.8 sq. ft)