



Barnet Grove, E2

£1,275,000

Dexters



Barnet Grove, E2

A four double bedroom terraced house split over two levels and measuring in excess of 1120 square ft. This freehold property has an open plan living room and kitchen with dedicated dining area, generous west facing garden and has wooden flooring throughout.

On entering at ground level you are greeted by a well lit corridor with tiled flooring. To your left there is a stylish living room and kitchen with authentic wooden flooring, ornate fireplace and dedicated space for dining. To the rear there is a double bedroom with en suite and access to the garden via a door in the rear passage.

On the first floor up a centralised staircase there are three double bedrooms and a family bathroom. This level also has wooden flooring, and desk space in each room.

Located in one of East London's most sought after neighbourhoods with Columbia Road under 200 yards away with its abundance of popular restaurants and shops. Bethnal Green tube is half a mile walk (Central line).

Features

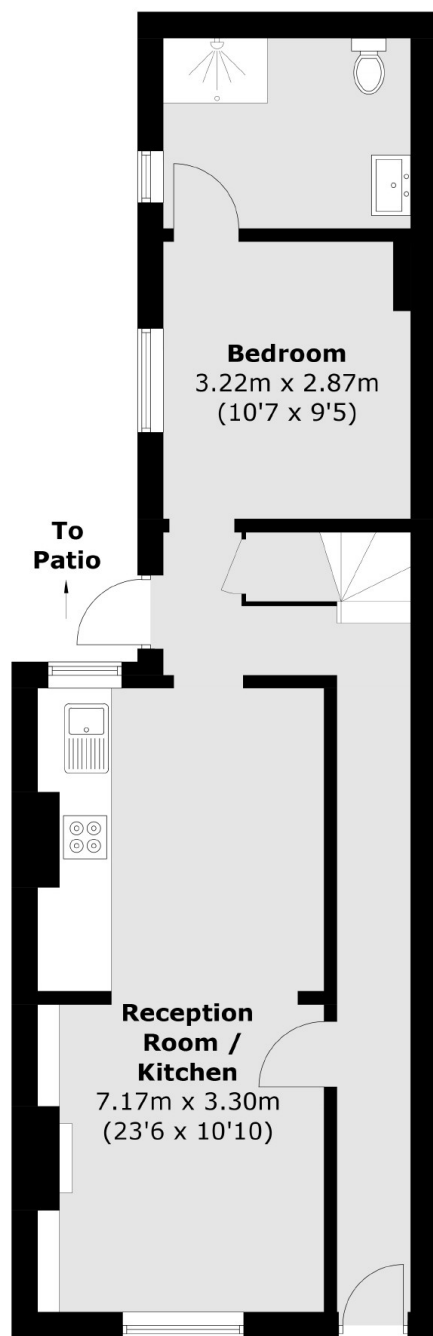
- Offers In Excess Of
- Four Double Bedrooms
- Chain Free
- Two Bathrooms
- Garden
- Freehold



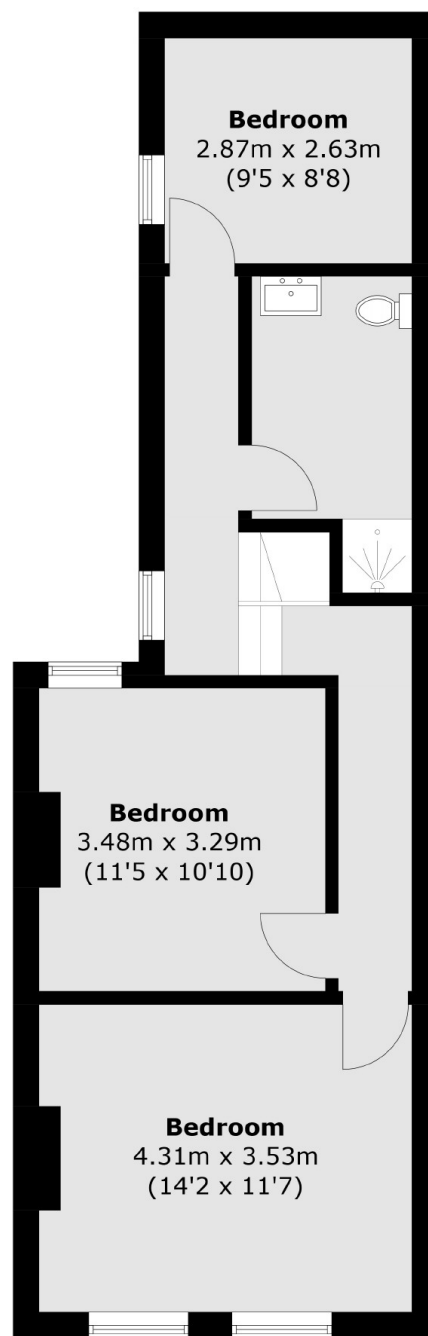




Barnet Grove, London, E2



Ground Floor



First Floor

Total area (approx.): 104.9 sq. m (1,129.1 sq. ft)