



Wharf Place, E2

£400,000

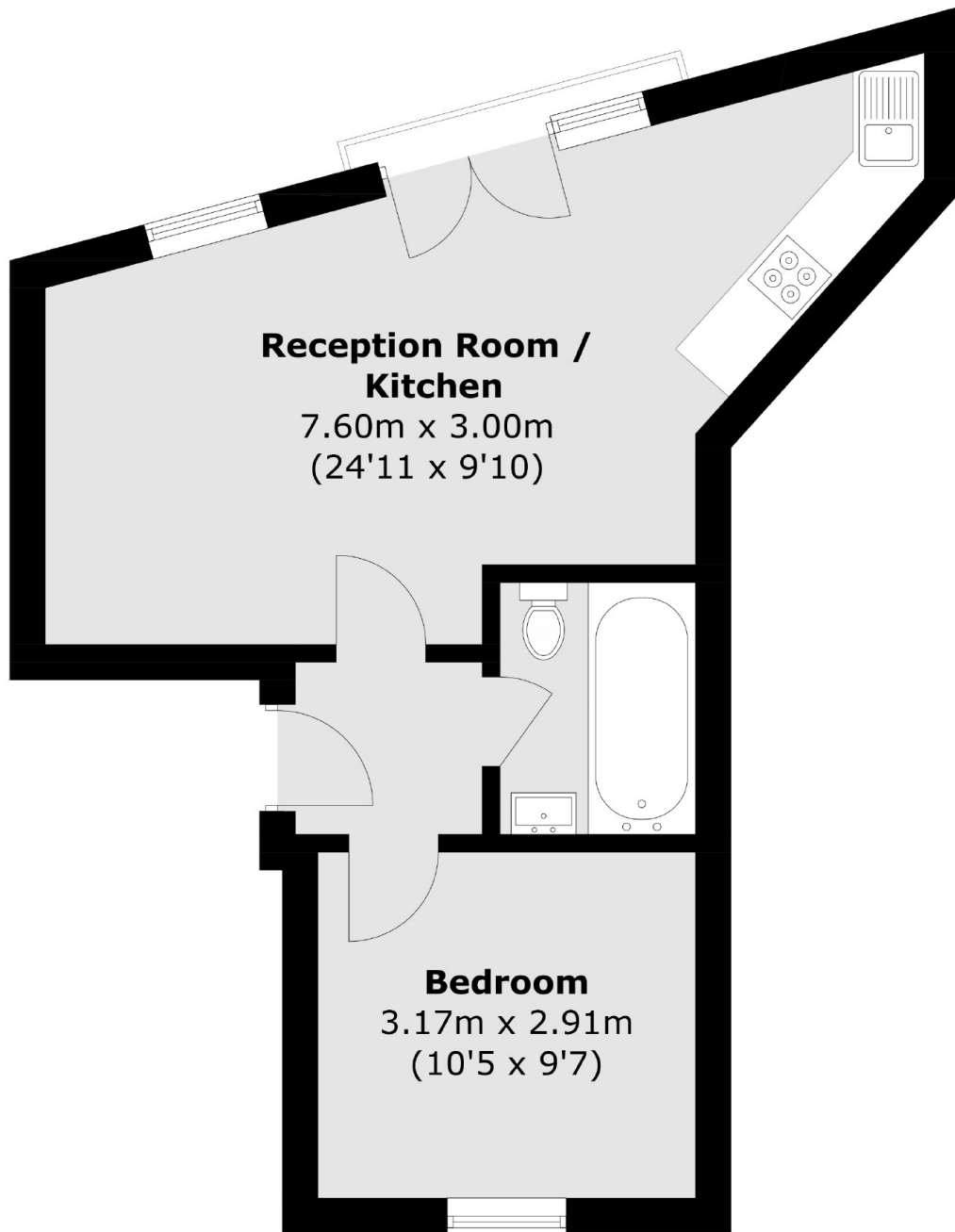
A one bedroom apartment on Regents Canal. The property benefits from an open plan kitchen/ living area with windows facing the canal and access to communal terrace gardens with views towards the popular Broadway Market.

Located at the bottom of Broadway Market, right on the Canal with an abundance of local amenities and London Fields Park nearby. Also ideally located a short walk away from Bethnal Green underground and London Fields Overground.

Features

- Chain Free
- Juliette Balcony
- Underground Parking
- Communal Gardens
- Regents Canal
- Broadway Market
- Columbia Road Flower Market

Wharf Place, London, E2



Total area (approx.): 39.4 sq. m (424.1 sq. ft)