



Wharf Place, E2

£725,000

A beautiful two double bedroom, two bathroom apartment within a warehouse conversion that overlooks Regents Canal. This property offers high ceilings throughout and has been refurbished to a high standard and benefits from underground parking.

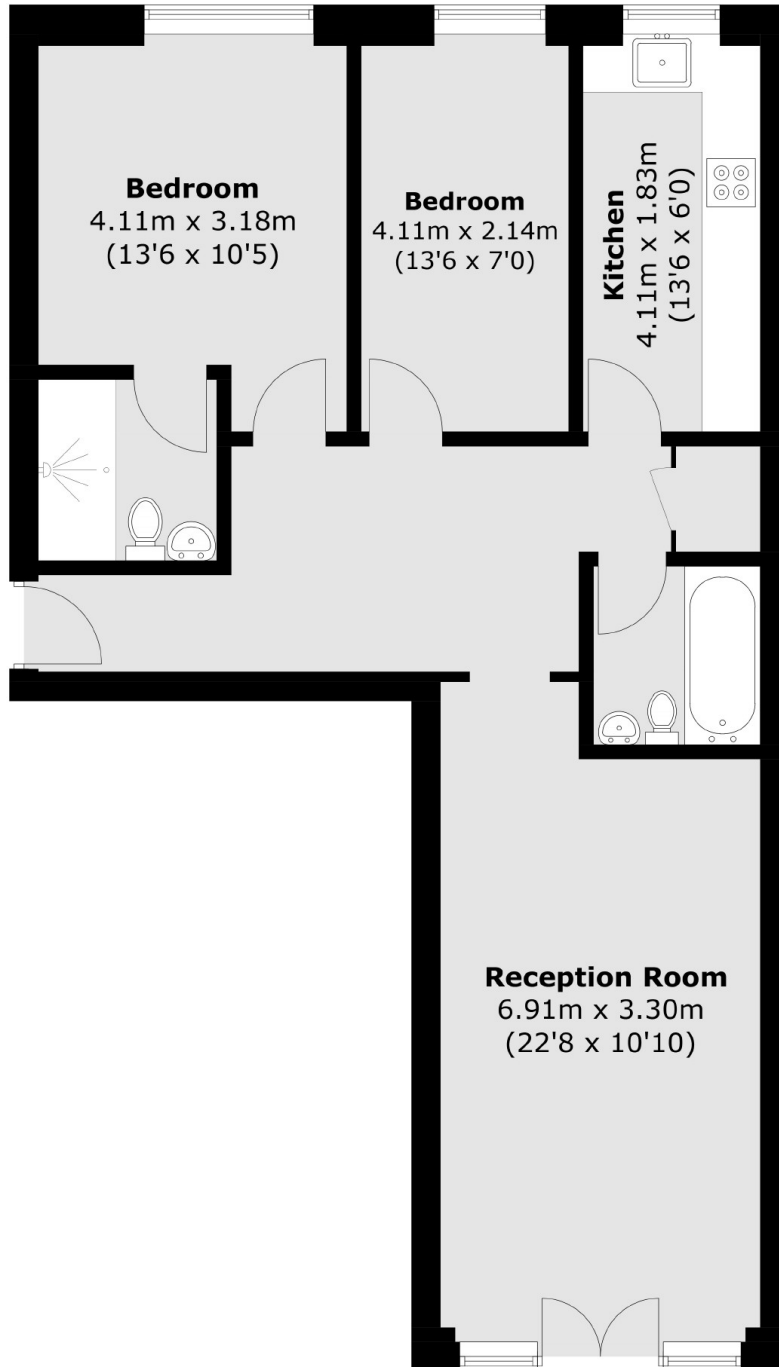
Located at the bottom of Broadway Market, right on the Canal with an abundance of local amenities and London Fields Park nearby.

Also ideally located a short walk away from Bethnal Green underground and London Fields Overground.

Features

Offers In Excess Of
Two Double Bedroom
Two Bathrooms
Underground Parking
Juliette Balcony
Bike Storage
London Fields
Broadway Market

Wharf Place, London, E2



Total area (approx.): 72.3 sq. m (778.2 sq. ft)

Dexters

Hackney
10 Broadway Market
London
E8 4QJ
Sales
0207 247 2440

Energy Rating: E. We aim to make our particulars both accurate and reliable. However they are not guaranteed; nor do they form part of an offer or contract. If you require clarification on any points then please contact us, especially if you're traveling some distance to view. Please note that appliances and heating systems have not been tested and therefore no warranties can be given as to their good working order.

 **RICS** | Regulated
Estate Agent
and Letting Agent

[dexters.co.uk](https://www.dexters.co.uk)