



Roman Road, E3

£425,000

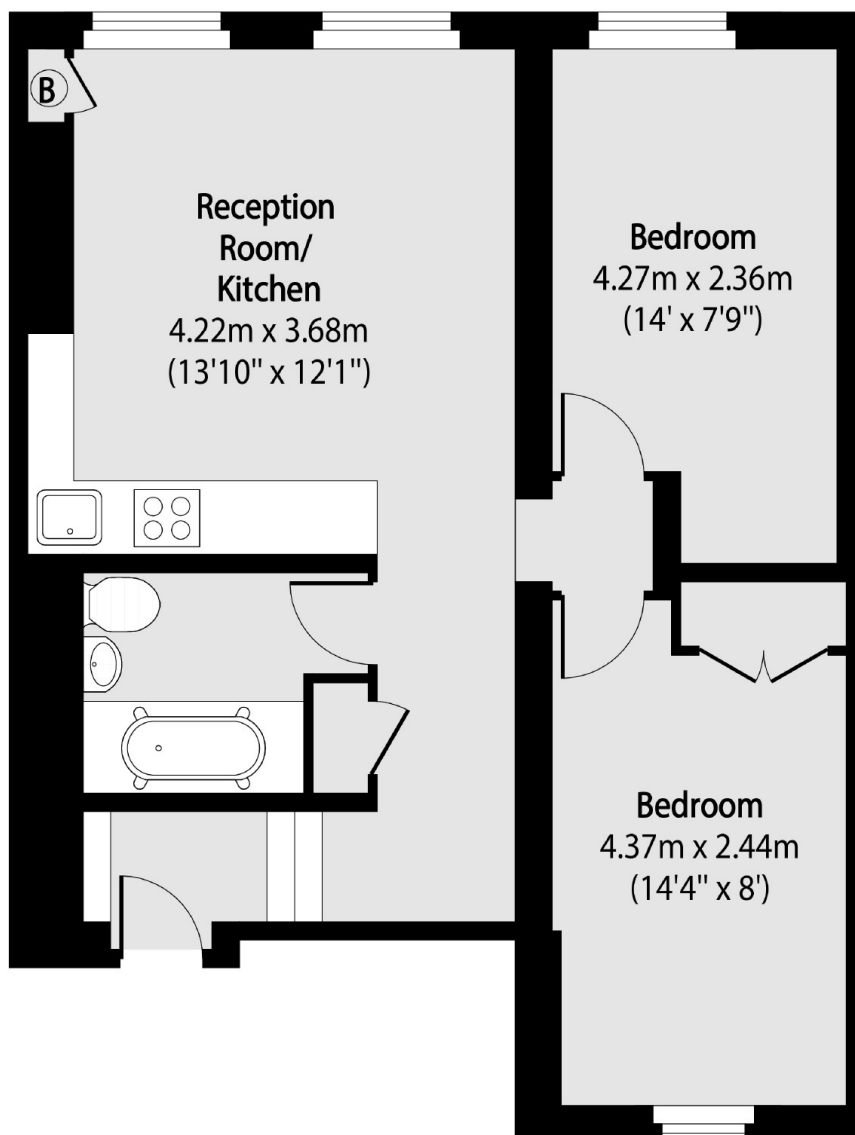
A well presented two double bedroom apartment in the heart of Roman Road. The property benefits from a bright open plan kitchen area, exposed brick, wooden flooring and high ceilings throughout.

Ideally located under a miles walk away from Bethnal Green, Mile End and Bow Road tube stations making for great transport links in and around the city. Roman road offers endless amenities, cafes and bars and a market three times a week.

Features

Offers In Excess Of
Two Bedrooms
Open Plan
High Ceilings
Wooden Flooring
Roman Road
Bethnal Green

Roman Road, London, E3



Total area (approx): 51.19 sq m (551 sq. ft)