



Dace Road, E3

£530 Per week

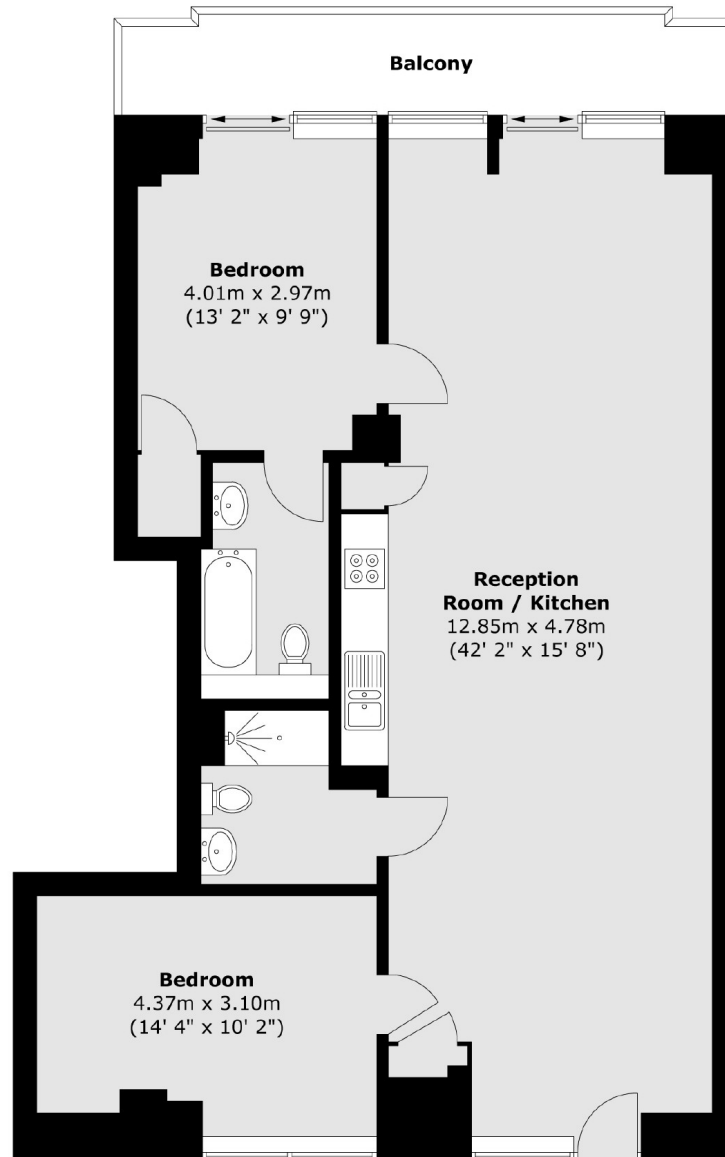
A two bedroom, two bathroom apartment in the popular development in Iron Works. This property has wooden flooring throughout, open plan living space leading onto a private balcony with an on-site porter and communal gardens.

This gated development perfectly situated by the River Lea and across from Queen Elizabeth Olympic Park, with Hackney Wick Station less than mile away.

Features

- Two Double Bedroom
- Two Bathroom
- Open Plan
- Wooden Flooring
- Balcony
- On-site Porter

Dace Road, London, E3



Total area (approx.) : 95.8 sq. m (1031 sq. ft)
Total balcony area (approx.) : 9.9 sq. m (106 sq. ft)