



Wharf Place, E2

£600,000

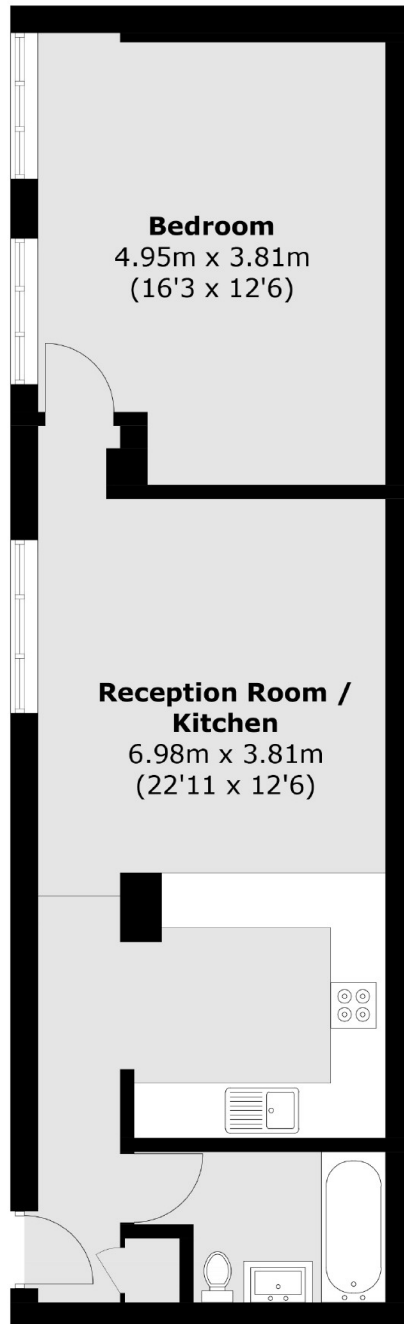
A large one bedroom apartment on Regent's Canal. The property benefits from an open plan kitchen/ living area with windows facing the canal and access to communal terrace gardens with views of the popular Broadway Market.

Located at the bottom of Broadway Market, right on the Canal with an abundance of local amenities and London Fields Park nearby. Also ideally located a short walk away from Bethnal Green underground and London Fields Overground.

Features

- Chain Free
- Offers In Excess Of
- Underground Parking
- Communal Gardens
- Regent's Canal
- Broadway Market
- Columbia Road Flower Market

Wharf Place, London, E2



Total area (approx.): 52.9 sq. m (569.4 sq. ft)

Dexters

Hackney
10 Broadway Market
London
E8 4QJ
Sales
0207 247 2440

Energy Rating: C. We aim to make our particulars both accurate and reliable. However they are not guaranteed; nor do they form part of an offer or contract. If you require clarification on any points then please contact us, especially if you're traveling some distance to view. Please note that appliances and heating systems have not been tested and therefore no warranties can be given as to their good working order.

 **RICS** | Regulated
Estate Agent
and Letting Agent

[dexters.co.uk](https://www.dexters.co.uk)