



Rookwood Way, E3

£475,000

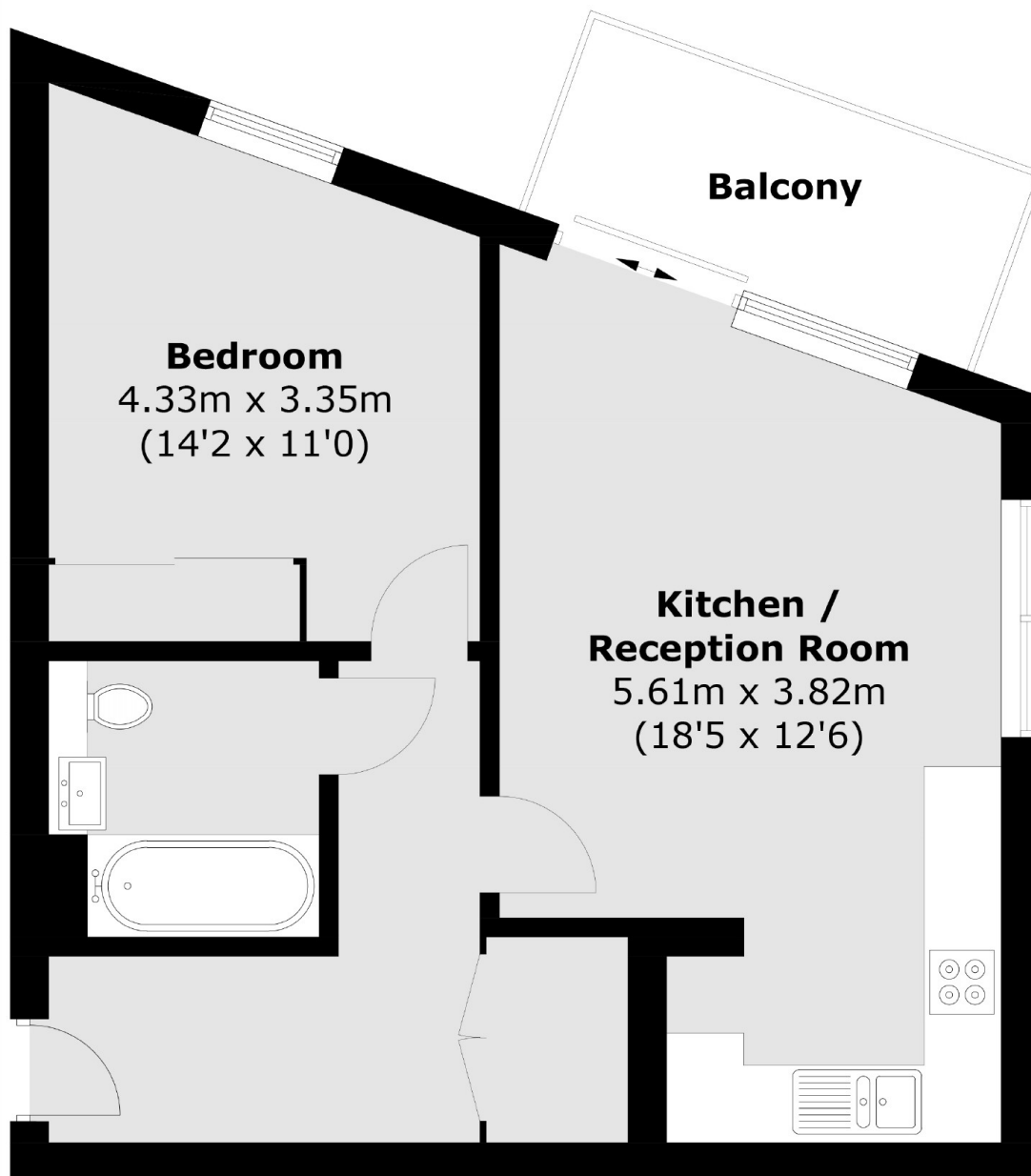
A top floor dual aspect apartment with panoramic views of East London and Canary Wharf. This property has been lovingly maintained by the current owner, offers open plan living and kitchen with floor to ceiling windows, double bedroom with fitted wardrobes and a private terrace.

The property is located a short walk from the greeneries of Queen Elizabeth Olympic Park and Victoria Park. Hackney Wick overground station is also close by as well as Westfield Shopping centre across the park.

Features

- Top Floor
- Panoramic Views
- Open Plan
- Modern
- Integrated appliances
- Bike Storage

Rookwood Way, London, E3



Total area (approx.): 51.5 sq. m (554.3 sq. ft)
Balcony area (approx.): 5.8 sq. m (62.4 sq. ft)