



## Taylor Place, E3

£325,000

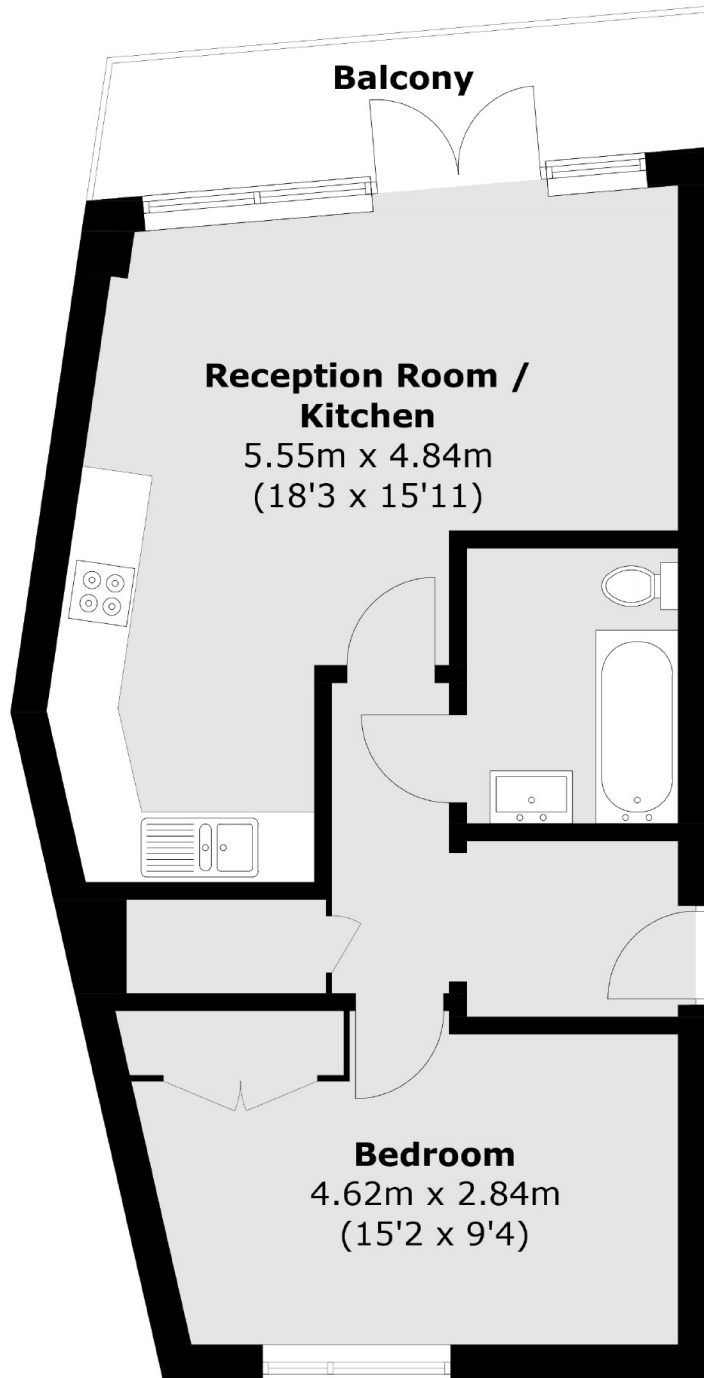
A spacious modern one bedroom apartment in the popular Fondant Court development. With a well sized open plan kitchen-living space. This property has plentiful storage and floor to ceiling windows from the private balcony allowing an abundance of natural light throughout. And also benefits from an on site concierge and secure underground parking.

Centrally located within easy reach of Bow, Stratford, Hackney Wick and Victoria Park for all local shops, restaurants and cafés as well as great transport links including multiple tube stations within 0.3 of a mile

### Features

- Chain Free
- Large Balcony
- Secure Underground Parking
- 24 hr Concierge
- EWS1: B1
- Views towards the Olympic Park

# Taylor Place, London, E3



Total area (approx.): 47.8 sq. m (514.5 sq. ft)  
Balcony (approx.): 5.9 sq. m (63.5 sq. ft)