

## Knapp Road, E3

£700,000

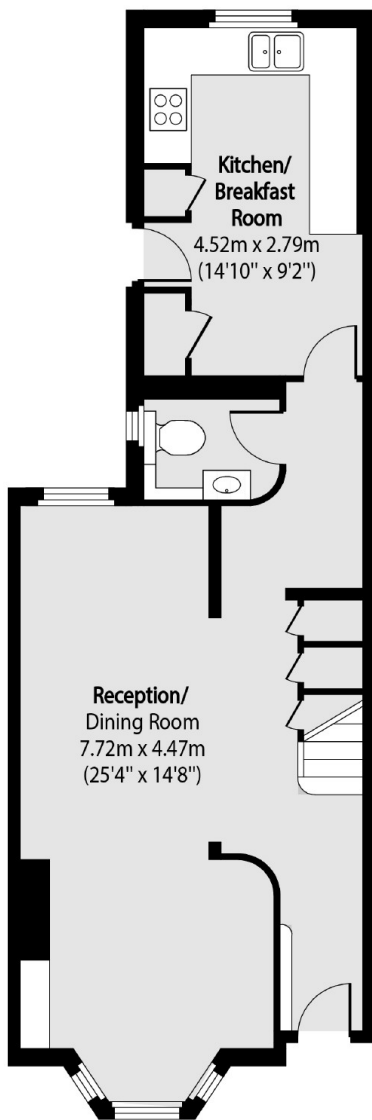
A three double bedroom Victorian terrace house with a generous manicured garden. This two storey property has an open plan living room with ample space to dine and high ceilings. There is sash windows throughout, a separate modernised kitchen, A separate WC on the ground floor and a family bathroom on the first floor.

The property is ideally located close to Mile End Station with good access to the City, Stratford Station and the Queen Elizabeth Olympic Park. There is also easy access to both Canary Wharf, Hackney and Victoria Park. Nearby ample green spaces such as Mile End and Tower Hamlets Park.

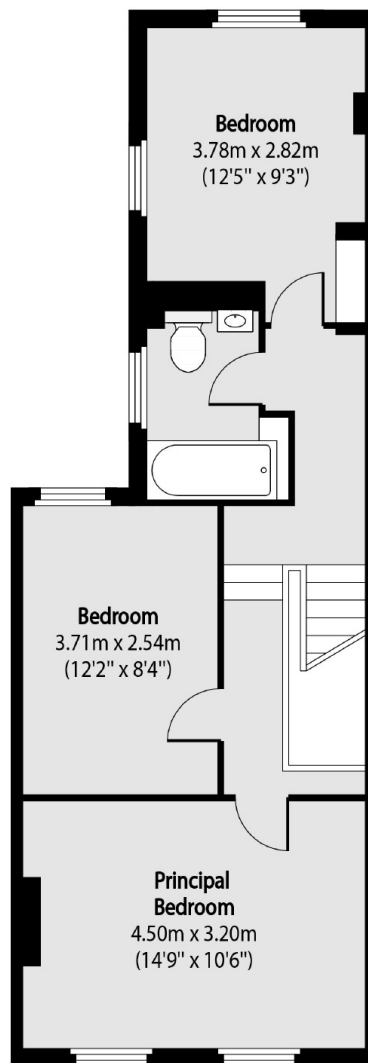
### Features

Offers In Excess Of  
Three Double Bedrooms  
Modern Finish  
Open Plan  
Sash Windows  
Freehold  
Garden

# Knapp Road, London, E3



Ground Floor



First Floor

Total area (approx): 97.36 sq m (1048 sq. ft)