



## Goldsmiths Row, E2

£675,000

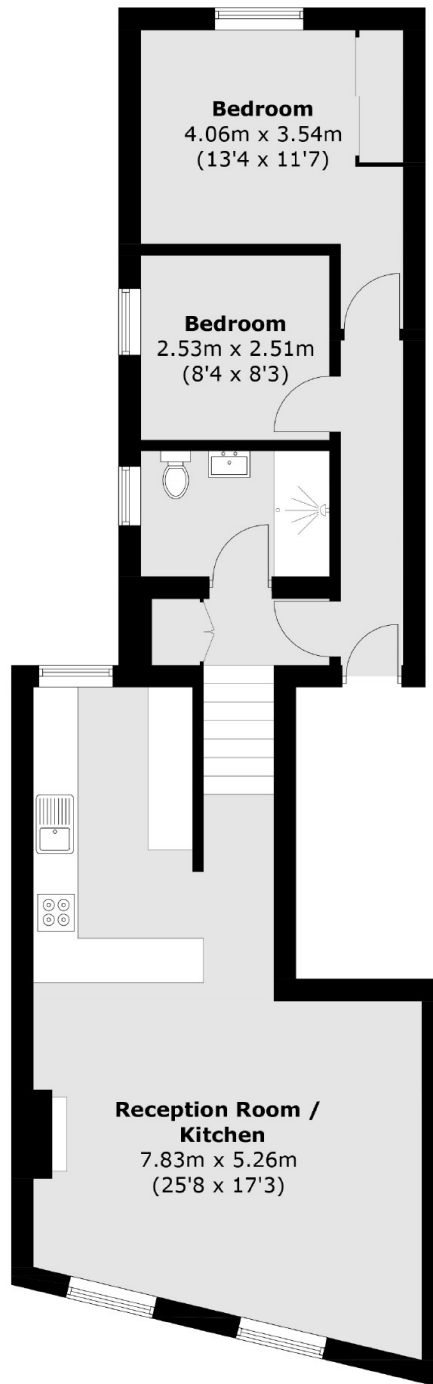
A two double bedroom first floor apartment set within a Victorian conversion. This property has been lovingly maintained and updated by the owner with refurbished wooden flooring, open plan living and kitchen with peninsula Island, cast iron radiators and has been freshly painted in all its rooms. This property has sash windows throughout, has a dedicated dining area and dual aspect in the living room and kitchen.

Goldsmiths row sits equidistant from Broadway Market and Columbia road, two of East London's most popular areas for food, drink and shopping. The nearest station Bethnal Green on the Central Line with one stop into Liverpool Street Station.

### Features

- Two Double Bedrooms
- Victorian Conversion
- Open Plan Living
- Sash Windows
- Recently Repainted
- Reconditioned Wooden Flooring

# Goldsmiths Row, London, E2



Total area (approx.): 65.9 sq. m (709.3 sq. ft)