



Helmsley Street, E8

£700,000

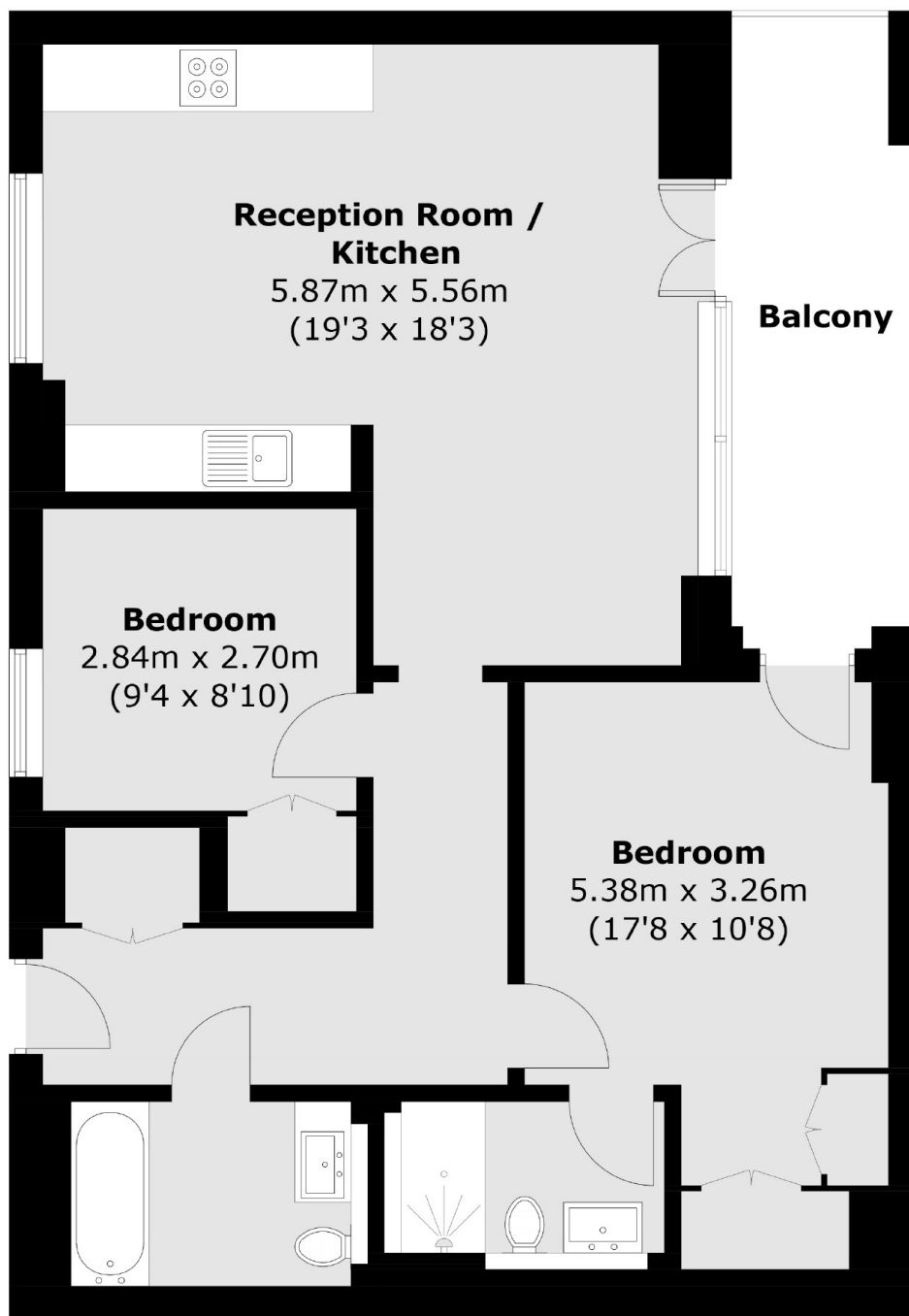
A modern two bedroom, two bathroom apartment with a open plan living and kitchen area, polished concrete floors and a private balcony. Within the building there is a Michelin star restaurant, 24 hour concierge, bike storage and a bakery/coffee shop.

Monohaus is situated perfectly around the corner from ample green spaces such as Victoria Park and London Fields and Broadway Market with all its boutique restaurants, bars and cafes. London Fields and Hackney Central stations are both less than half a mile away for easy access to the City as well as great bus routes and access to the Underground via Bethnal Green.

Features

- Offers In Excess Of
- Chain Free
- Two Double Bedrooms
- Two Bathrooms
- Private Balcony
- 24 Hour Concierge
- Sonos Home System

Helmsley Street, London, E8



Total area (approx.): 72.8 sq. m (782.5 sq. ft)
Balcony: 8.9 sq. m (95.8 sq. ft)