



**Wilton Way, E8**  
**£2,300,000**

**Dexters**





## Wilton Way, E8

A four double bedroom Victorian house with a south facing garden and an architecturally designed rear kitchen extension. This home has been perfectly maintained by the present owners and is being offered chain free.

You enter the house at ground level and on the left there is a dual aspect living room with sash windows, parquet flooring, Victorian shutters, feature fireplaces and steel frame door leading into a courtyard seating area. At the rear you walk into the modern glass extension curated by the architects Tectonics. This area comes with a bespoke kitchen, polished concrete work surfaces, terazzo tile floors and concertina sliding glazed doors opening out into the garden.

On the first floor there is a principle bedroom, with a walk in dressing room that leads into a modern en suite bathroom. At the mid level there is a secondary double bedroom.

The top floor has two further double bedrooms, family bathroom and access to loft space.

Located on one of Hackneys prime roads with an abundance of famous cafes, bakeries and restaurants on your doorstep. The nearest station is London Fields or Hackney Central on the overground with easy access into the city.

### Features

- Offers In Excess Of
- Four Bedrooms
- Architecturally designed
- South Facing Garden
- Two Bathrooms
- Parquet Flooring





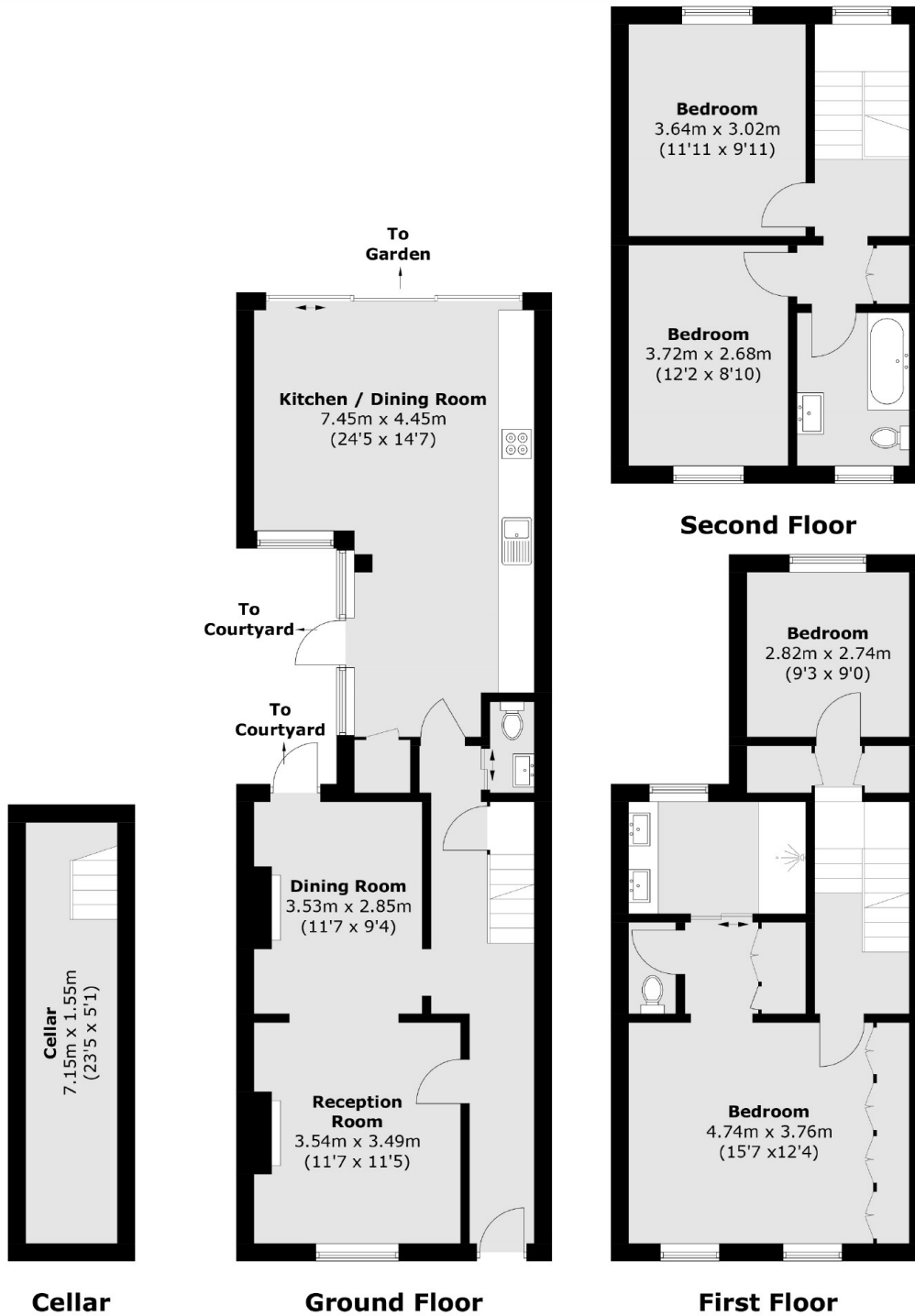








# Wilton Way, London, E8



Total area (approx.): 161.5 sq. m (1,738.4 sq. ft)