



## St. Stephens Road, E3

£625,000

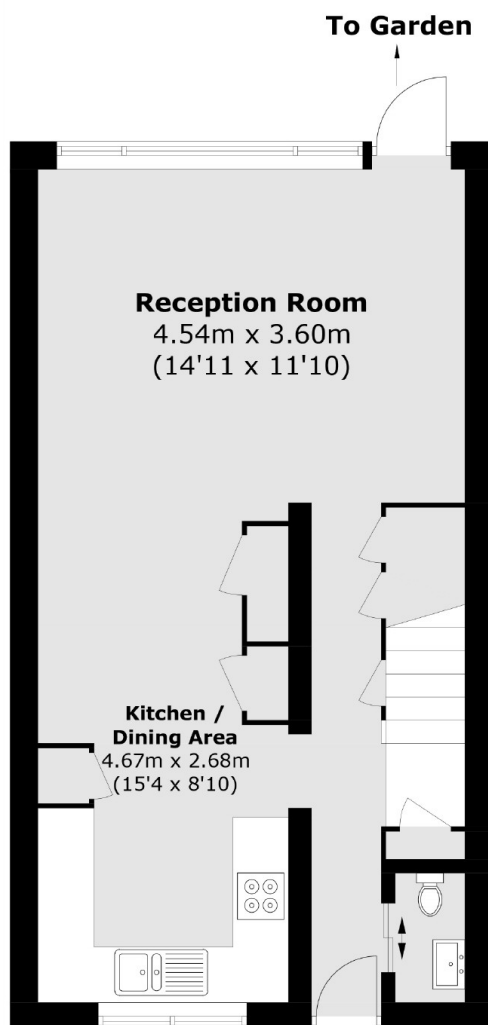
A three bedroom maisonette with a private west facing garden. This property has been stylishly refurbished by the current owners. On the ground floor there is a dual aspect open plan kitchen, dining and living area with floor to ceiling windows with a door out into the manicured garden. The top floor has a modern family bathroom, three bedrooms and the principle room has built in storage.

St Stephens road is located 100 yards from Victoria Park. There is an abundance of shops, cafes and eateries under a quarter of a mile on Roman Road. Bow road and Mile end can be located within a mile on the District, Hammersmith and City as well as Central Line.

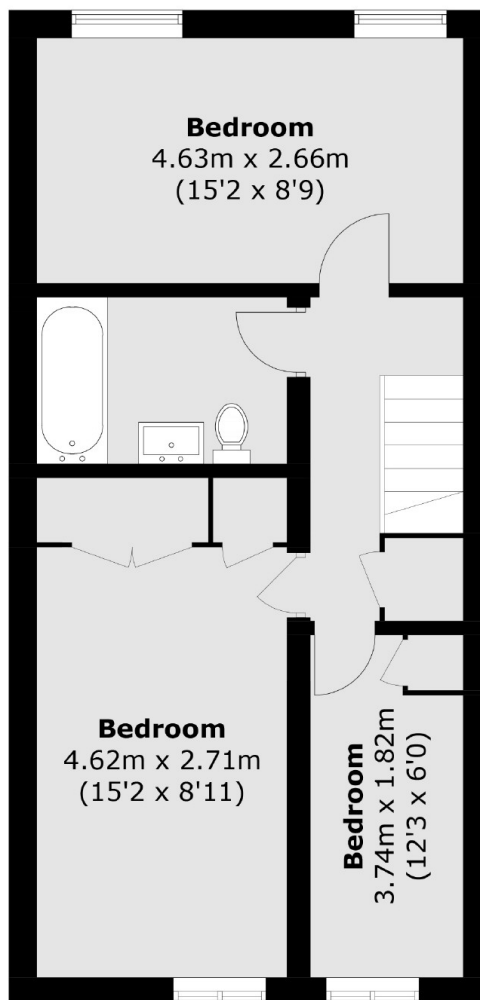
### Features

- Two Double Bedrooms
- Study/Single Bedroom
- Stylish Renovation
- Maisonette
- Garden
- Close to Victoria Park

# St. Stephens Road, London, E3



**Ground Floor**



**First Floor**

Total area (approx.): 88.3 sq. m (950.5 sq. ft)