



Elrington Road, E8

£2,650,000

Dexters



Elrington Road, E8

A four double bedroom Victorian terrace house located on one of Hackneys prime roads. This property has a well manicured west facing garden, is set over four stories and has been loving maintained by the present owners.

Entering at ground level you have a dual aspect living room with bay window, high ceilings, giving a bright and spacious feel, double doors out into the garden and two feature fireplaces. Down a small set of steps you enter into the kitchen with space to dine, a window overlooking the garden and separate WC. There is also a fully whitewashed basement for extra storage.

On the mid level and to the rear of the house there is a double bedroom with double height ceilings and a family bathroom. Up to the first floor there is full width bedroom with large sash windows and an original fireplace.

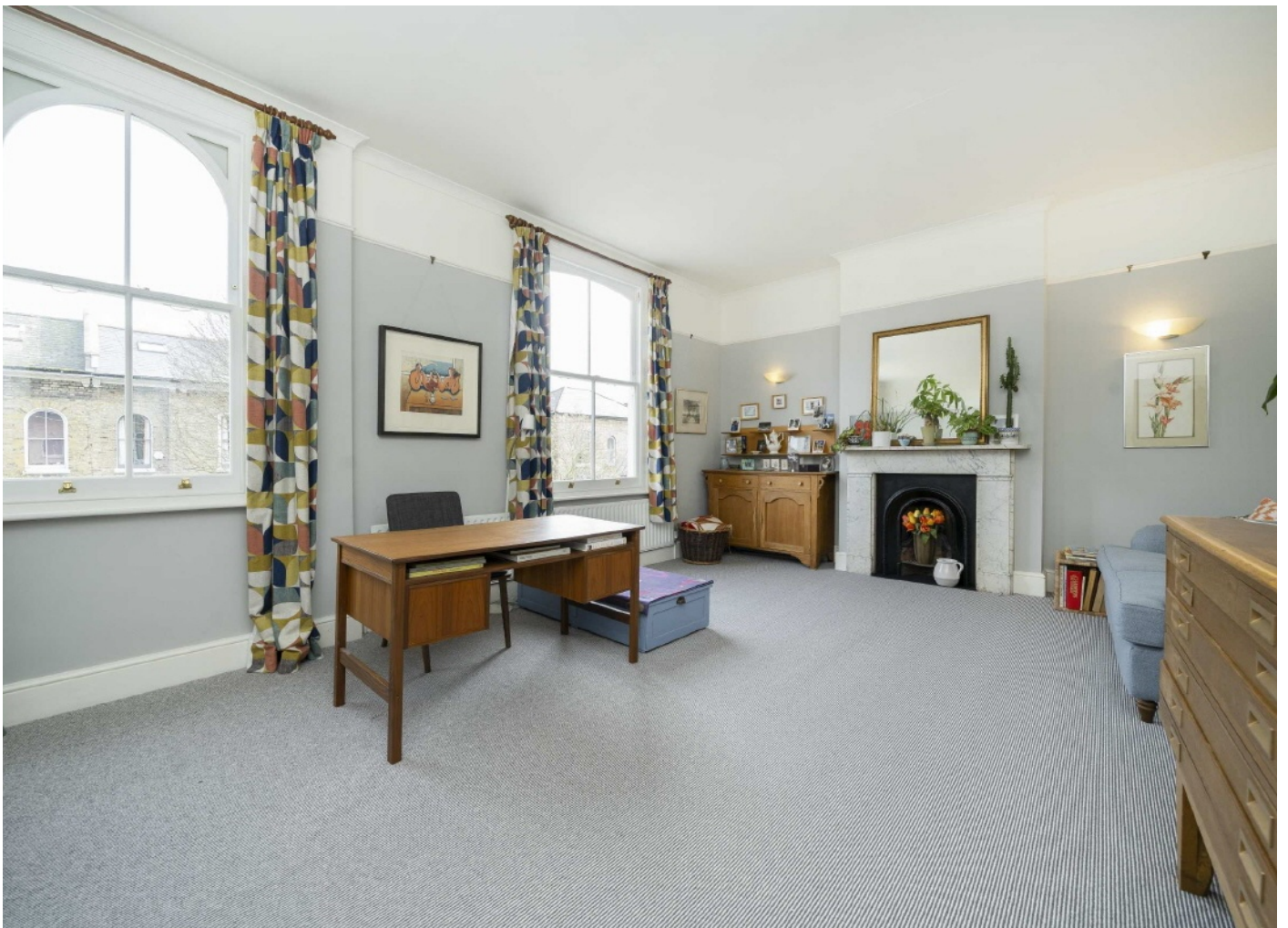
On the top floor there is a further bedroom, this room has eaves storage, Velux windows and exposed beams.

This property is located under half a mile from London fields and Broadway market with its abundance of cafés, restaurants, shops and its famous Saturday market. The nearest station is London Fields on the over ground giving access to the city in three stops.

Features

- Offers In Excess Of
- Four Double Bedrooms
- Original Period Features
- Garden
- London Fields
- Prime Location







Elrington Road, London, E8



Total area (approx.): 195.4 sq. m (2,103.2 sq. ft)