

Killowen Road, E9

£675,000

A beautiful freehold house with open plan living close to Victoria Park. This property has a private entrance and is laid out over two floors with a featured staircase.

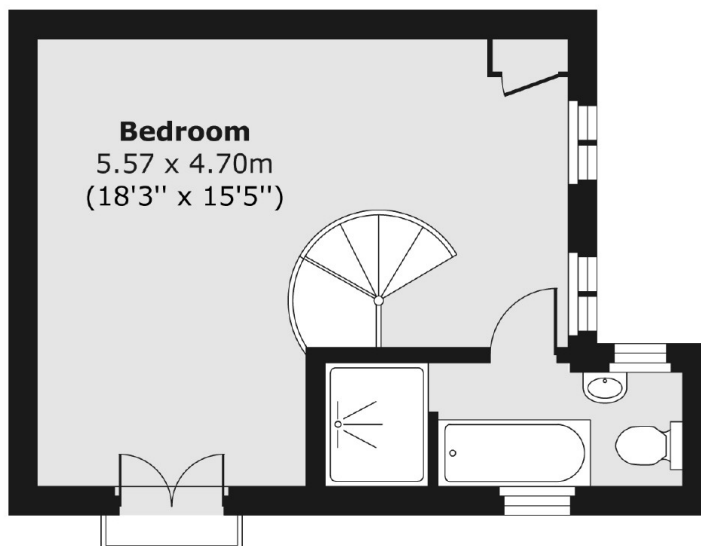
Positioned between London Fields and Victoria Park, with endless transports links including London Fields and Homerton Station; with ample green areas close by, this is an idyllic location with a country in the city feel.

Features

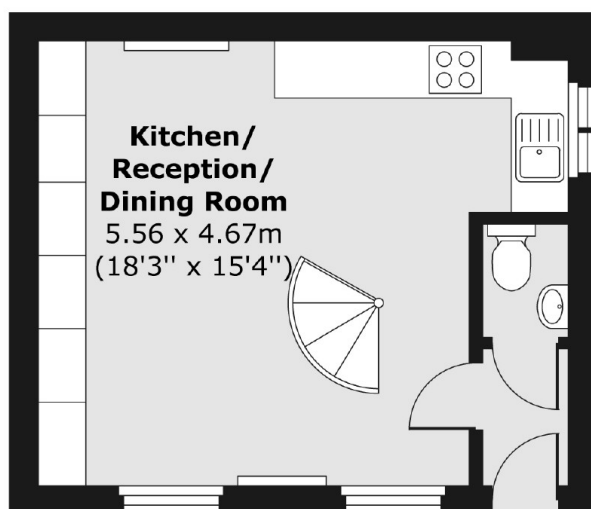
- Freehold House
- Juliet Balcony
- Featured Spiral Staircase
- Downstairs W/C
- Victoria Park
- Local Markets

Killowen Road, London, E9

First Floor



Ground Floor



Total area (approx.) 53.59 sq. m (577 sq. ft)
Balcony area (approx.) 0.44 sq. m (5 sq. ft)