



Brookfield Road, E9

£775,000

Dexters



Brookfield Road, E9

A two double bedroom Victorian maisonette with a private garden share of the freehold. This property maintains many of its period features with sash windows, feature fireplace and ornate cornicing. There is a modern semi open plan kitchen and living room, large family bathroom with roll top bath as well as generous storage and loft access.

Brookfield road is located just off Victoria Park which can be accessed by a 50 yard walk. Victoria park village is under half a mile walk with its abundance of cafes, pubs and shops. The nearest station is Homerton on the Overground under half a mile away.

Features

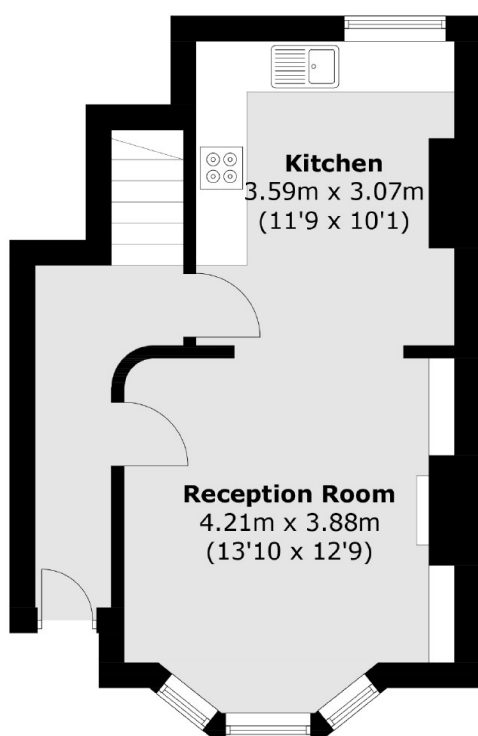
- Two Double Bedrooms
- Share Of Freehold
- Victorian Conversion
- Close to Victoria Park
- Private Garden
- Maisonette



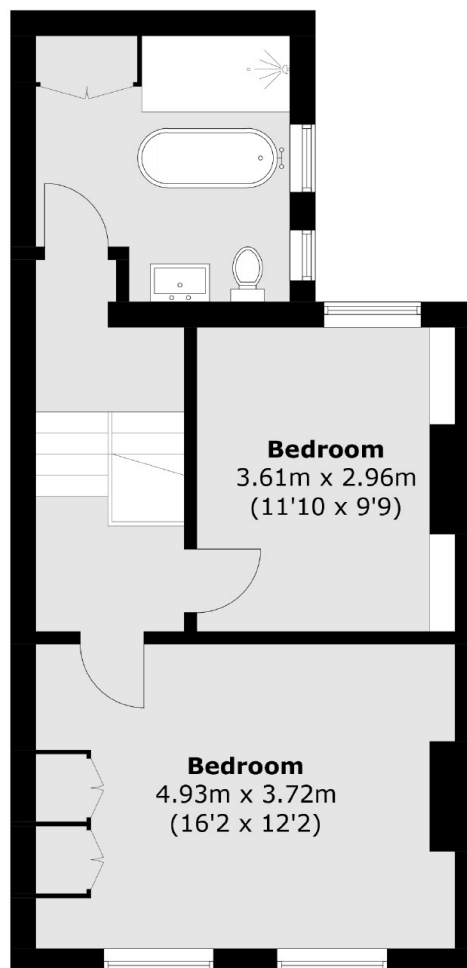




Brookfield Road, London, E9



Ground Floor



First Floor

Total area (approx.): 80.2 sq. m (863.2 sq. ft)