

Shore Place, E9 £400,000

A one bedroom apartment set on the first floor of this purpose built yellow-brick mansion block in the heart of Hackney. The property features a separate living room, a newly fitted kitchen and has been redecorated by the current owner.

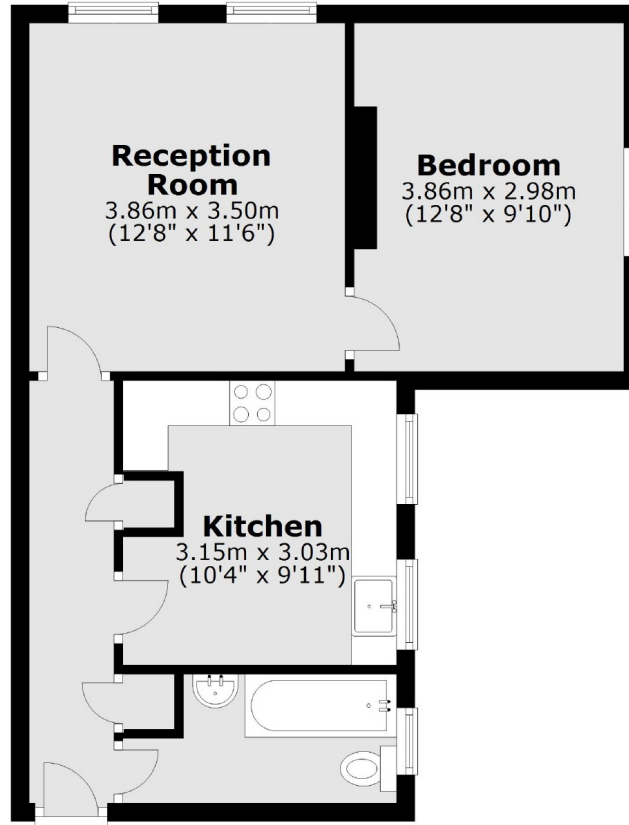
Shore Place is a quiet residential road based just off Well Street with its endless amenities. The green spaces of London Fields and Victoria Park are both within 0.5 miles distance, as well as excellent transport links into the City.

Features

- Offers In Excess Of
- Private Block
- Low Service Charge
- Secure Entry System
- London Fields
- Broadway Market

Shore Place, London, E9

First Floor



Total area: approx. 44.9 sq. metres (482.8 sq. feet)