



King Edward's Road, E9

£575,000

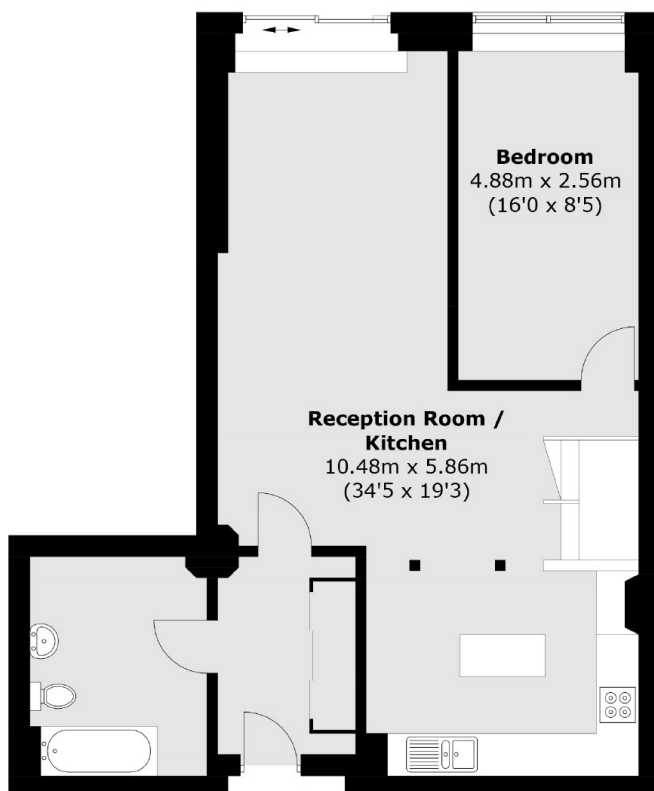
A one bedroom apartment with its own courtyard garden located within an old clothing factory. This property benefits from being chain free, has double height ceilings and floor to ceiling windows. There is a mezzanine level which can be used as an office or sleeping area.

King Edwards Road is positioned perfectly between Broadway Market with all of its shops, bars and restaurants, London Fields and Victoria Park. London Fields & Cambridge Heath stations are both under half a mile from the property.

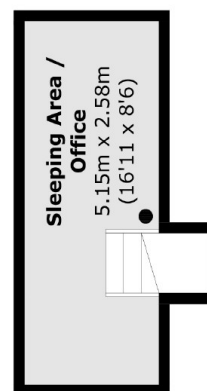
Features

Offers In Excess Of
Warehouse Conversion
Art Deco Building
Mezzanine Floor
Lift Serviced
London Fields
Chain Free

King Edward's Road, London, E9



Ground Floor



Mezzanine Level

Ground Floor (approx.): 80.8 sq. m (868.6 sq. ft)
(Including Mezzanine Level)