



## Driffield Road, E3

£500,000

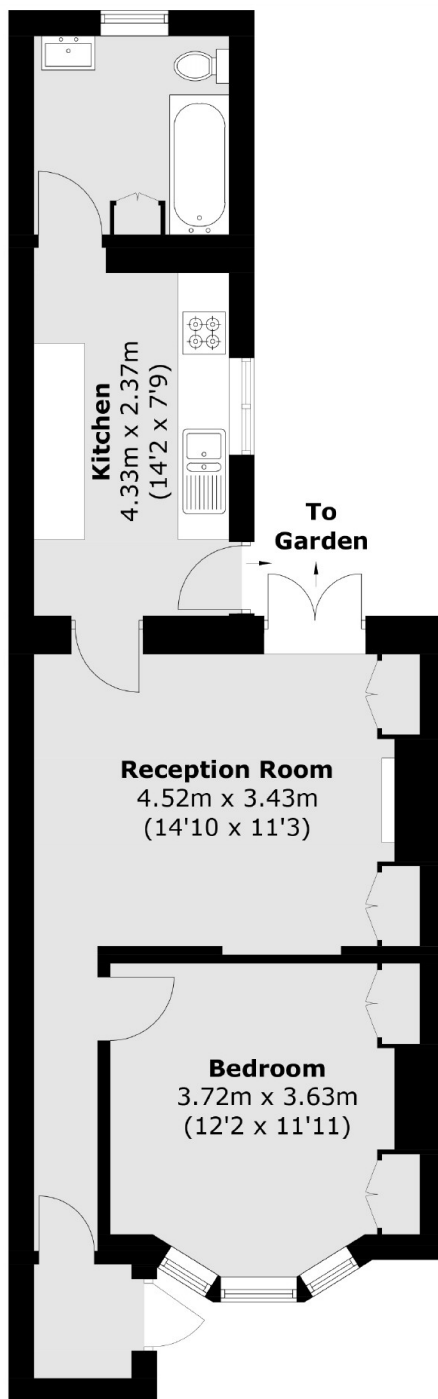
A one bedroom share of freehold apartment with a private garden. This property is set within a Victorian conversion and has maintained many of its period features. It has original wooden flooring in the bedroom and living room, a decadent fireplace and a separate fully renovated kitchen.

Driffield road is located just off Roman Road with its abundance of cafes, shops and eateries. The nearest station is Mile End which is on the Central line, District and Circle Line. Victoria Park is under a quarter of a mile away.

### Features

- One Double Bedroom
- Garden
- Period Features
- Wooden Flooring
- Modern Kitchen
- Share of Freehold

# Driffield Road, London, E3



Total area (approx.): 51.2 sq. m (551.1 sq. ft)