

Martello Street, E8

£650,000

A spacious, two bedroom flat situated on the corner of London Fields, with the potential to be a three bed due to a large live/work unit space. The property benefits from a private patio and offered with no onward chain.

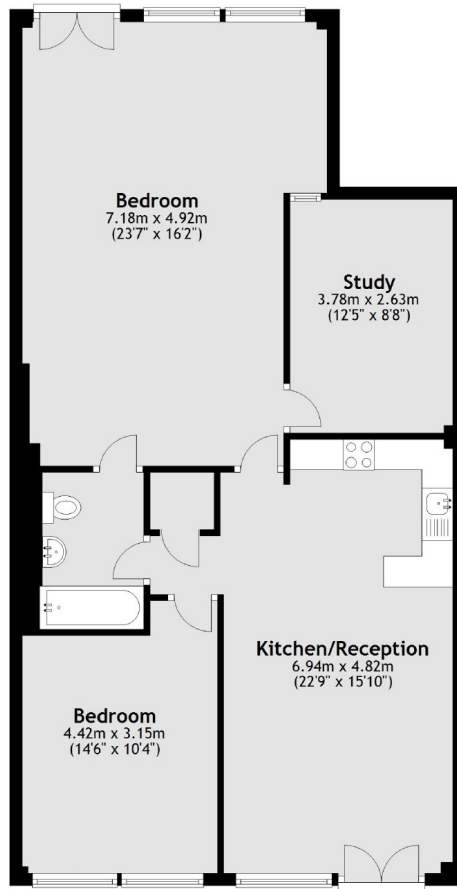
Ideally located just minutes from London Fields Overground station and within a short walk of the bars and restaurants of Broadway Market and Dalston.

Features

Offers In Excess Of
No Onward Chain
Two Double Bedrooms
Study
London Fields Lido
Private Patio
Private Parking

Martello Street, London, E8

Ground Floor



Total area: approx. 90.4 sq. metres (972.6 sq. feet)