

## Keirin Road, E20

£1,153 Per week

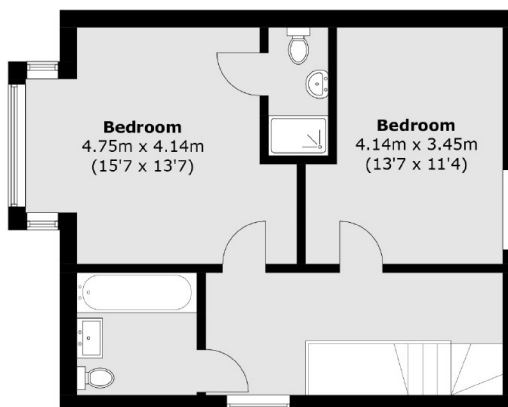
A four bedroom Townhouse in the Olympic Village. This property has been finished end high, floor to ceiling windows, open plan living space with high ceilings throughout and shared communal space.

The Olympic Athletes Village is located within easy reach of Westfield shopping centre in Stratford as well as the Olympic Stadium. With transport links running directly to Canary Wharf on the DLR as well as the Central Line.

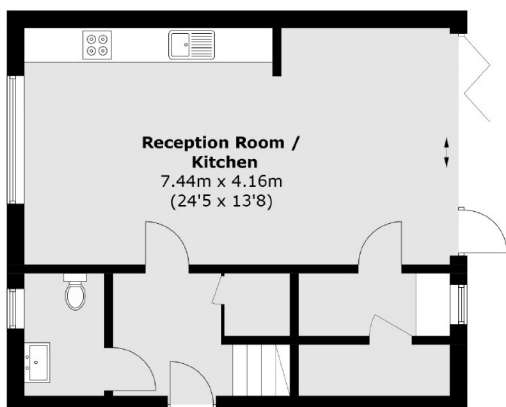
### Features

- Four Double Bedroom
- Three Bathroom
- Open Plan
- Utility Room
- Shared Communal Space
- Allocated Parking

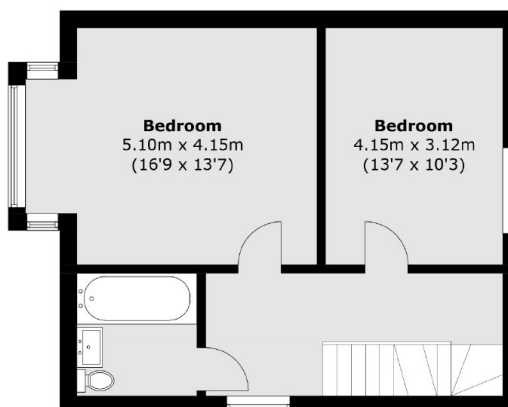
# Keirin Road, London, E20



**Second Floor**



**Ground Floor**



**First Floor**

Total area (approx.): 149.2 sq. m (1,605.8 sq. ft)