

Keirin Road, E20

£461 Per week

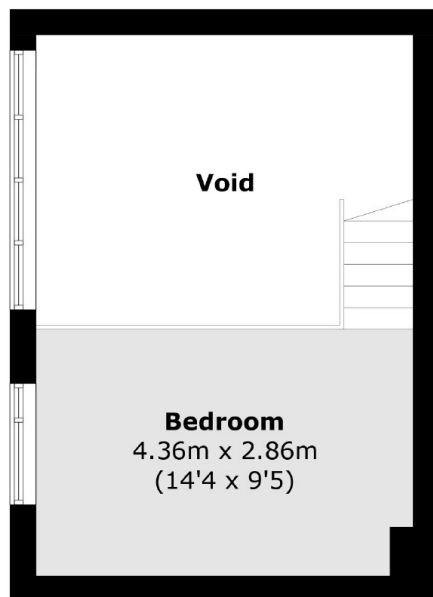
A one double bedroom duplex apartment in the Olympic Village. This property has its own private entry, floor to ceiling windows, open plan living space with high ceilings throughout and shared communal space.

The Olympic Athletes Village is located within easy reach of Westfield shopping centre in Stratford as well as the Olympic Stadium. With transport links running directly to Canary Wharf on the DLR as well as the Central Line.

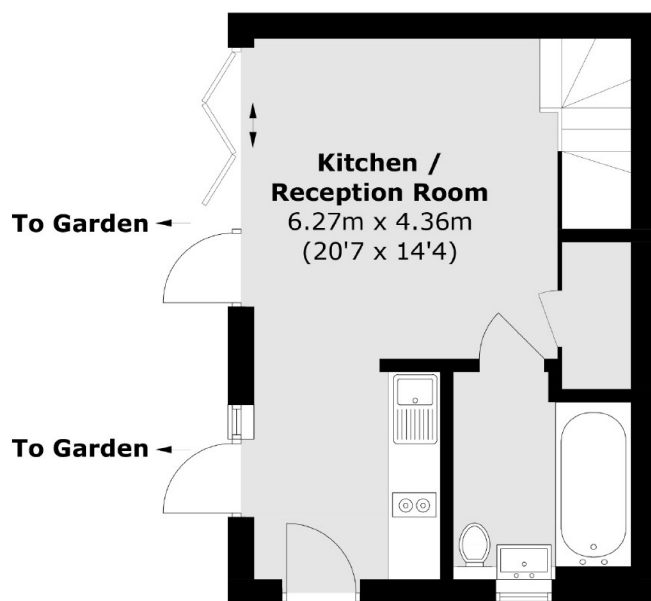
Features

- One Double Bedroom
- Floor to Ceiling Windows
- Open plan
- Duplex Apartment
- Furnished
- New Build

Keirin Road, London, E20



First Floor



Ground Floor

Total area (approx.): 41.4 sq. m (445.6 sq. ft)
(Excluding Void)