



Mentmore Terrace, E8

£1,000,000

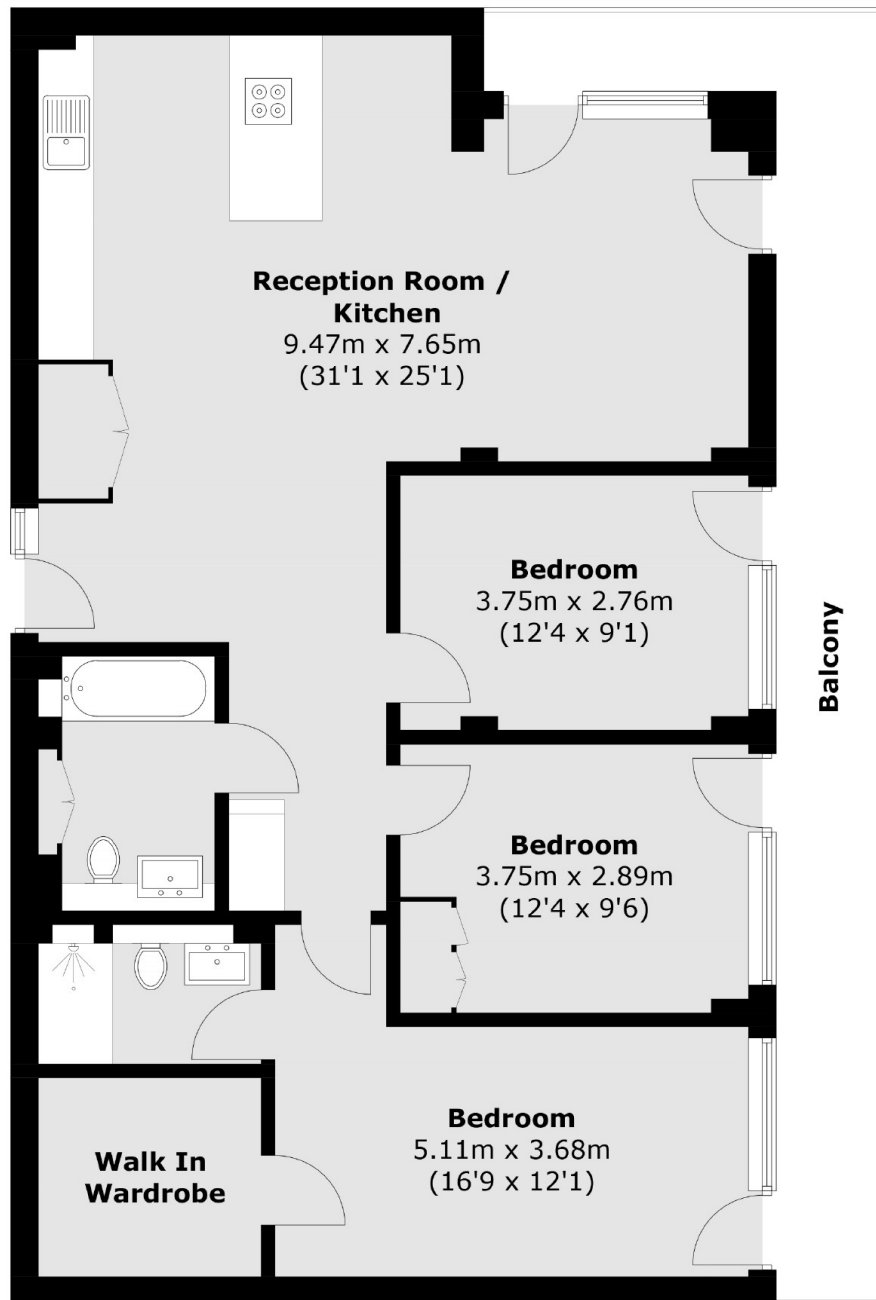
A three double bedroom apartment with a private wrap around terrace. This property has a modern open plan kitchen and living room with peninsula island, large family bathroom and engineered wooden flooring throughout. This property benefits from high ceilings, access to the terrace from all bedrooms and measures in excess of 1000 sqft.

Mentmore Terrace is perfectly located next to London Fields overground station and London Fields green and around the corner from Broadway Market with endless independent bars, restaurants and cafés.

Features

Offers In Excess Of
Three Double Bedrooms
Wrap Around Terrace
High Ceilings
Open Plan
Over 1000 Sqft

Mentmore Terrace, London, E8



Fifth Floor

Total area (approx.): 100.4 sq. m (1080.6 sq. ft)
Balcony: 18.7 sq. m (201.3 sq. ft)