



## Mentmore Terrace, E8

£1,025,000

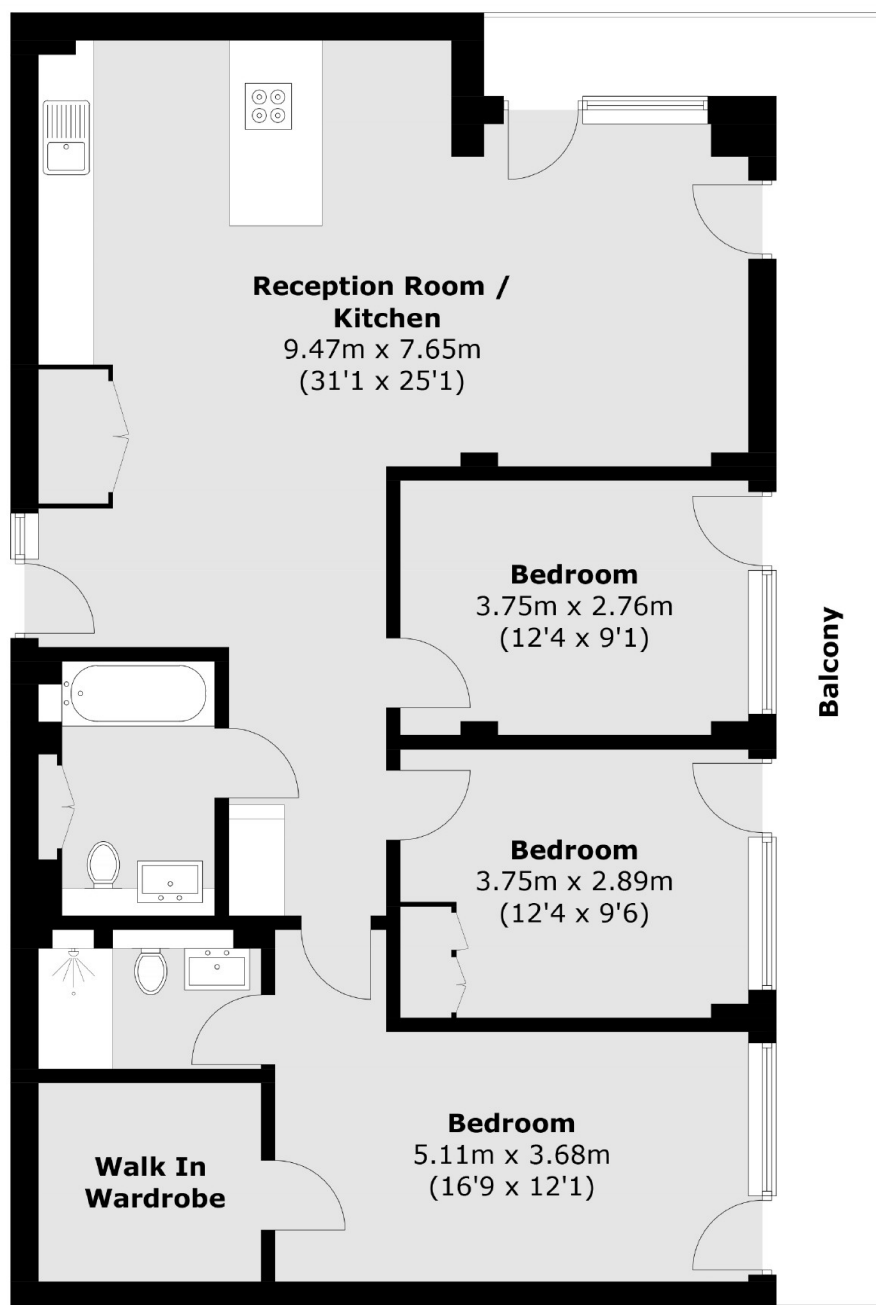
A three double bedroom apartment with a private wrap around terrace. This property has a modern open plan kitchen and living room with peninsula island, large family bathroom and engineered wooden flooring throughout. This property benefits from high ceilings, access to the terrace from all bedrooms and measures in excess of 1000 sqft.

Mentmore Terrace is perfectly located next to London Fields overground station and London Fields green and around the corner from Broadway Market with endless independent bars, restaurants and cafés.

### Features

- Three Double Bedrooms
- Wrap Around Terrace
- High Ceilings
- Open Plan
- Over 1000 Sqft

# Mentmore Terrace, London, E8



## Fifth Floor

Total area (approx.): 100.4 sq. m (1080.6 sq. ft)  
Balcony: 18.7 sq. m (201.3 sq. ft)