



Rhondda Grove, E3

£475,000

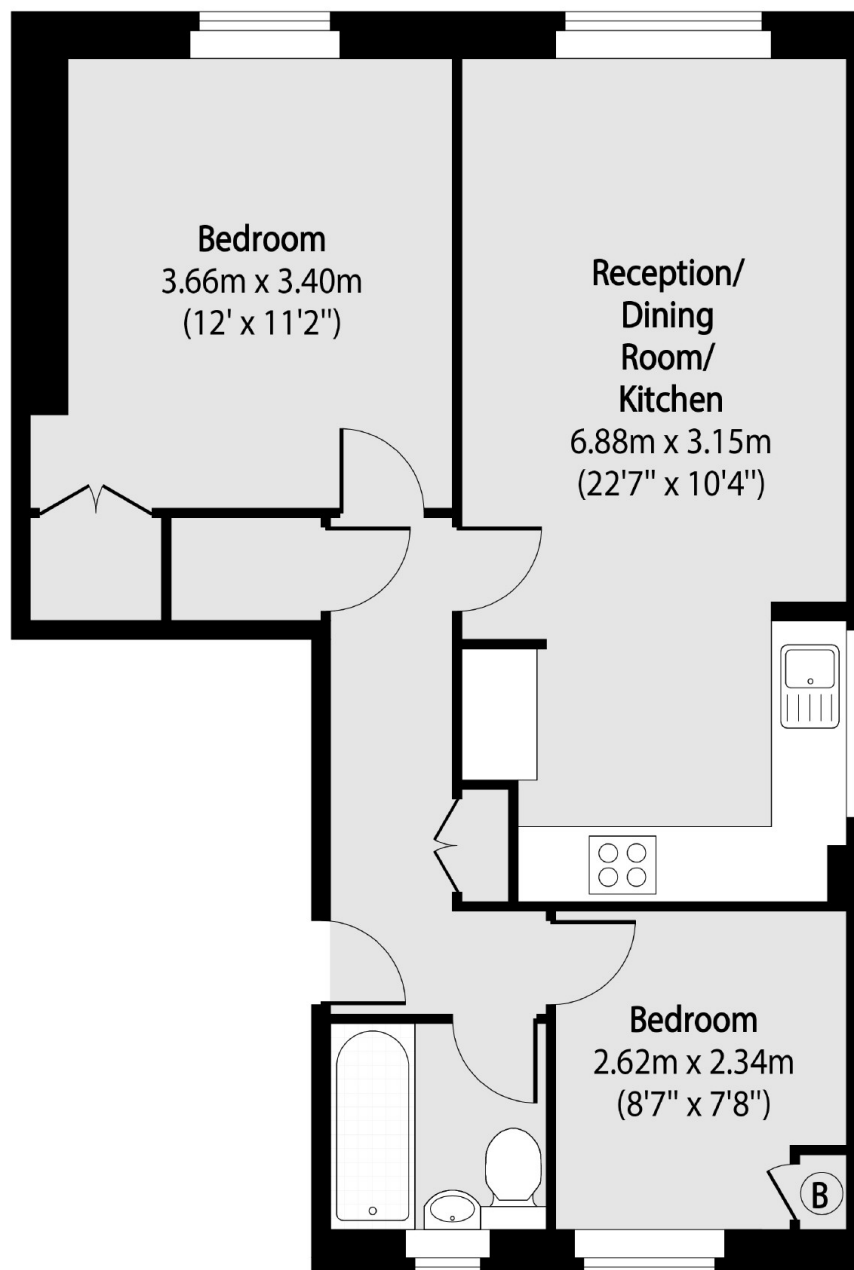
A two double bedroom apartment on the first floor of this purpose built block. This property has a south facing open plan kitchen/living room, generous storage and access to a shared garden. It is being sold chain free.

Located on Rhondda Grove close to the Tredegar Square Conservation area, this property is 100 yards from Mile end Station on the Central, District and Hammersmith and city line. There is a choice of popular pubs close by as well as victoria park half a mile walk.

Features

- Chain Free
- Two Double Bedrooms
- Shared Garden
- First Floor
- South Facing

Rhondda Grove, London, E3



Total area (approx): 50.17 sq m (540 sq. ft)