



## Buttermere Walk, E8

£550,000

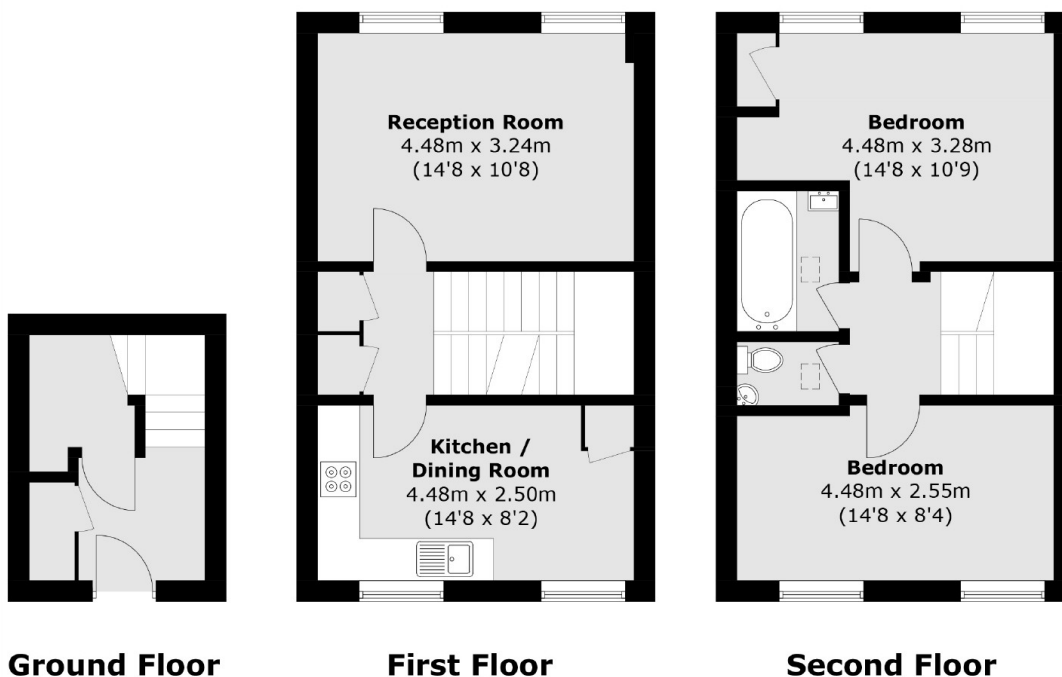
A two double bedroom maisonette with its own private garden. This property has its own private entrance and is laid out over 3 floors with a separate kitchen and living area, dedicated dining space and is being offered chain free.

Located on a quiet residential street with Kingsland Road under a quarter of a mile walk away, with its plethora of shops, restaurants and bars. The nearest station is Dalston Junction half a mile walk on the overground.

### Features

- Two Double Bedrooms
- Private Garden
- Maisonette
- Chain Free
- Separate Kitchen
- Kingsland Road

# Buttermere Walk, London, E8



**Ground Floor**

**First Floor**

**Second Floor**

Total area (approx.): 79.1 sq. m (851.4 sq. ft)