

Lauriston Road, E9

£600,000

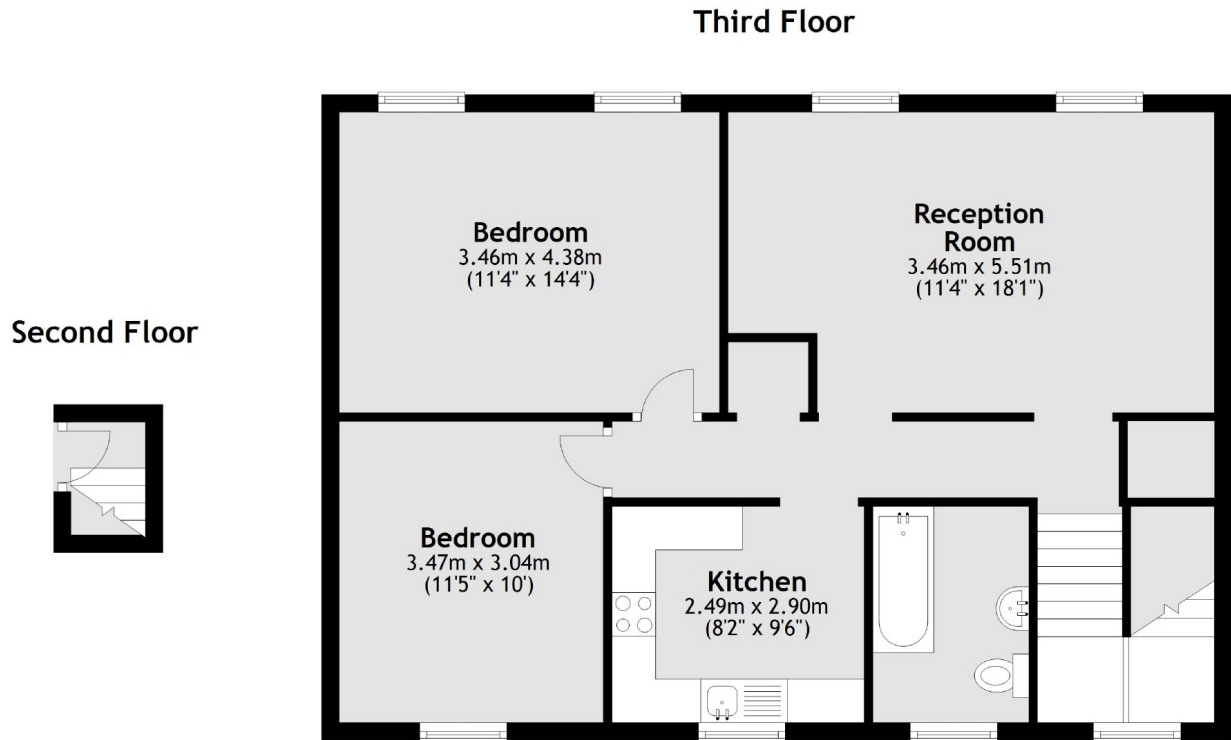
A well presented two double bedroom top floor flat, benefiting from a separate kitchen/living space and shared garden, based within a period conversion.

Ideally located moments away from the sought after Victoria Park Village, offering endless amenities, fine property and ample green spaces such as Well Street Common and Victoria Park. Also nearby to London Fields and Homerton Overground Stations, making for great transport links into the city.

Features

Offers In Excess Of
Two Double Bedrooms
Top Floor Flat
Shared Garden
Period Conversion
Victoria Park
Well Street Common

Lauriston Road, London, E9



Total area: approx. 71.9 sq. metres (773.6 sq. feet)