



Goldsmiths Row, E2

£700,000

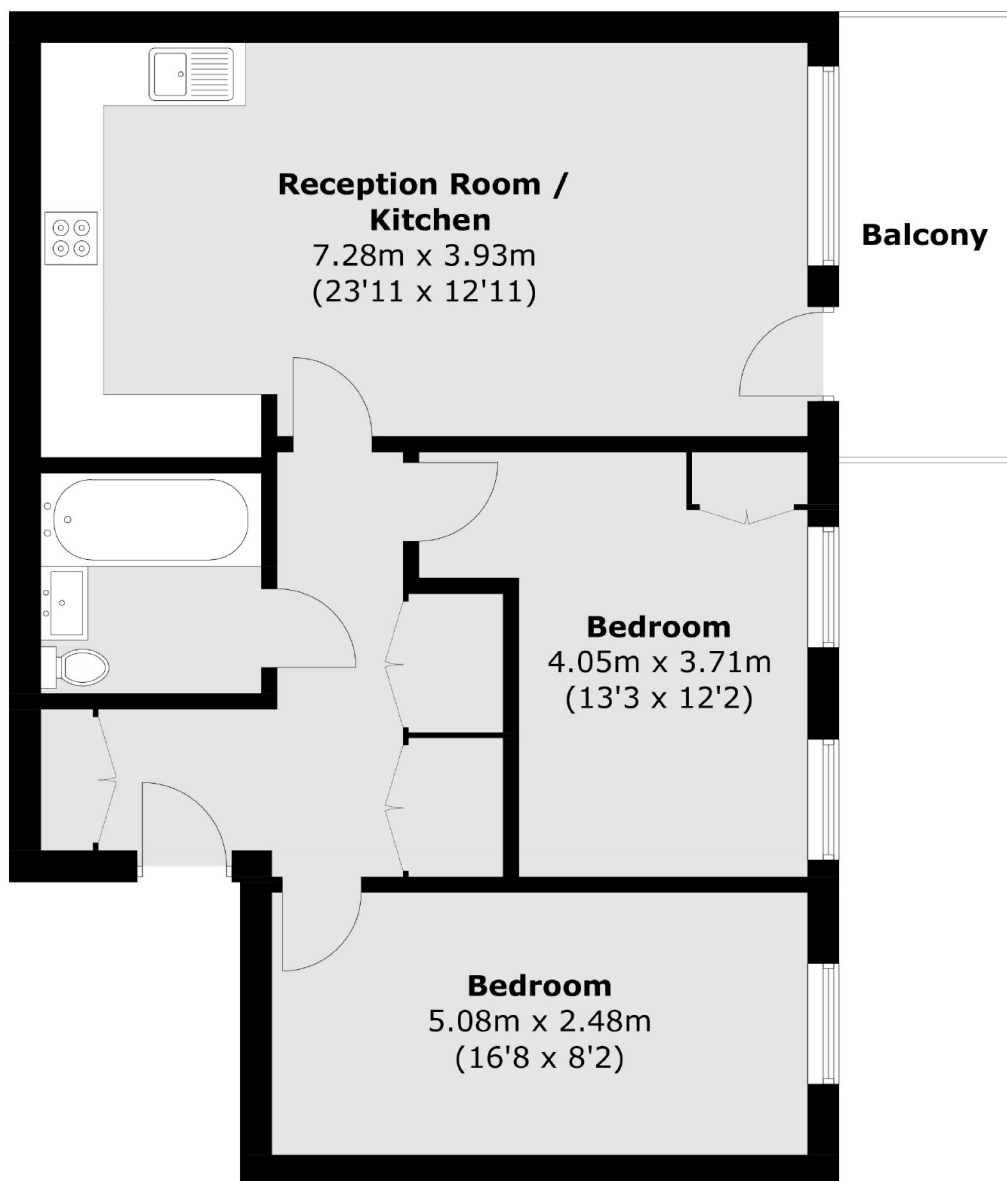
A high specification two bedroom apartment located on the third floor, in the heart of Hackney with the luxury of a private South - East facing balcony.

Goldsmiths Row leads directly into the popular Broadway Market and Regents Canal, with Hackney City farm adjacent and ample greens nearby. The property is located perfectly near local amenities and transport links to the City.

Features

Offers In Excess Of
Shared Communal Courtyard
Underfloor Heating
Floor to Ceiling Windows
Columbia Road Flower Market
Broadway Market

Goldsmiths Row, London, E2



Third Floor

Total area (approx.): 71.3 sq. m (767.4 sq. ft)
Balcony Area :6.9 sq. m (74.2 sq. ft)