



Mentmore Terrace, E8

£700,000

A two double bedroom, two bathroom apartment in the popular Warehaus Building, offering two private balconies, concierge and a communal terrace with heated rooftop swimming pool.

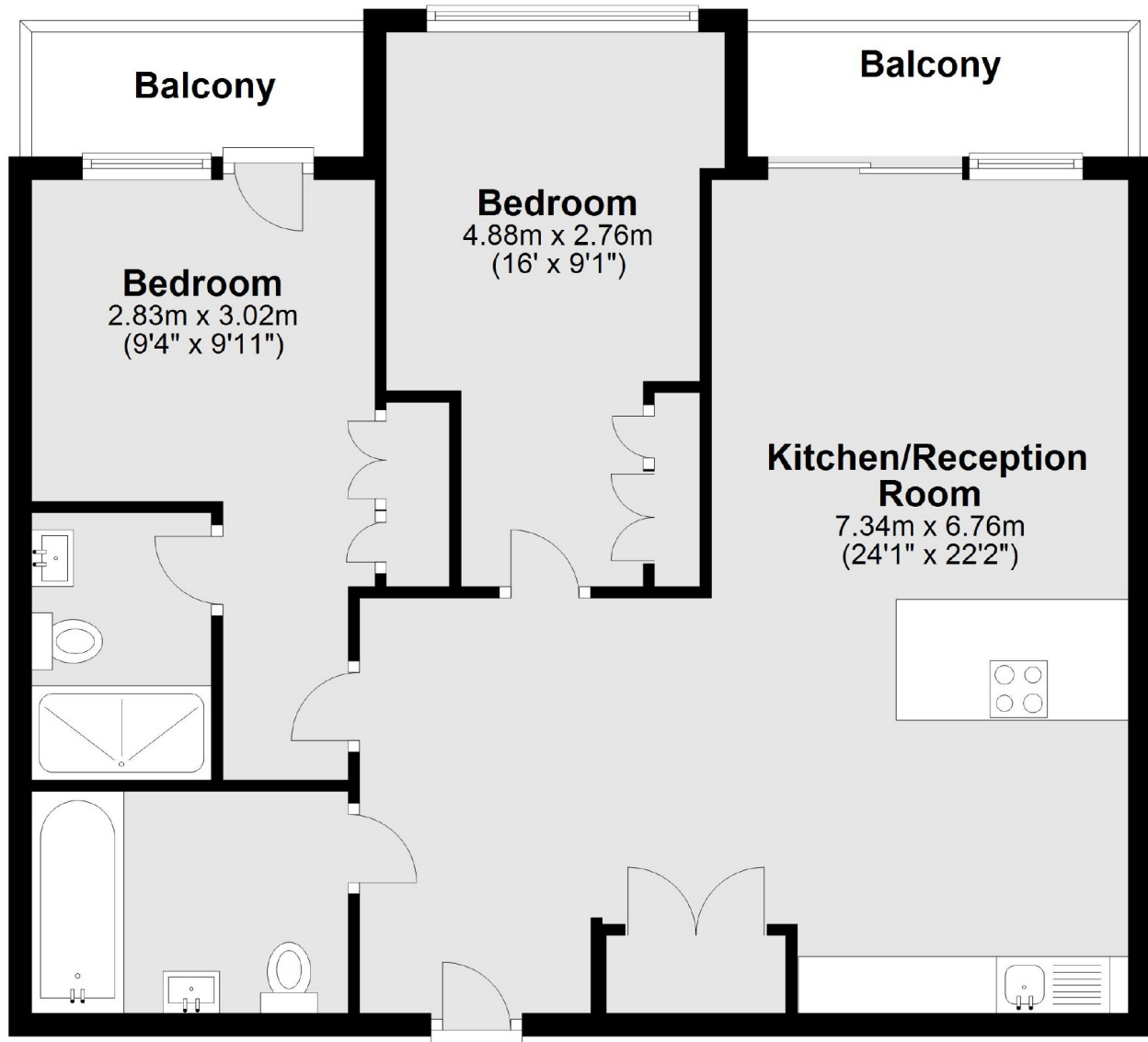
Mentmore Terrace is perfectly located next to London Fields overground station and London Fields green and around the corner from Broadway Market with endless independent bars, restaurants and cafes.

Features

Offers In Excess Of
No Onward Chain
Heated Roof Top Pool
Concierge
Lift Serviced
Two Balconies
London Fields

Mentmore Terrace, London, E8

Second Floor



Main area: Approx. 74.7 sq. metres (804.1 sq. feet)
Plus balconies, approx. 7.8 sq. metres (83.7 sq. feet)